



Buckleigh Road, SW16

£1,075,000

Dexters



Buckleigh Road, SW16

This unique property presents an excellent opportunity for buyers seeking either a dual-flat investment or the potential to convert back into a spacious single-family home. Currently configured as two self-contained flats under one freehold title, the property offers flexibility and scope for both investors and owner-occupiers.

The ground floor features two generous double bedrooms, a spacious layout, two bathrooms and direct access to a large private garden perfect for outdoor living and entertaining.

The upper flat comprises of three well-proportioned bedrooms, a separate reception room, two bathrooms and a large kitchen diner arranged over two floors, offering ample space and natural light throughout. Further benefits include a substantial rear garden and the potential for reconfiguration or development, subject to the necessary permissions. Located in a desirable area, this is a rare chance to secure two properties in one, with excellent flexibility for rental income or conversion.

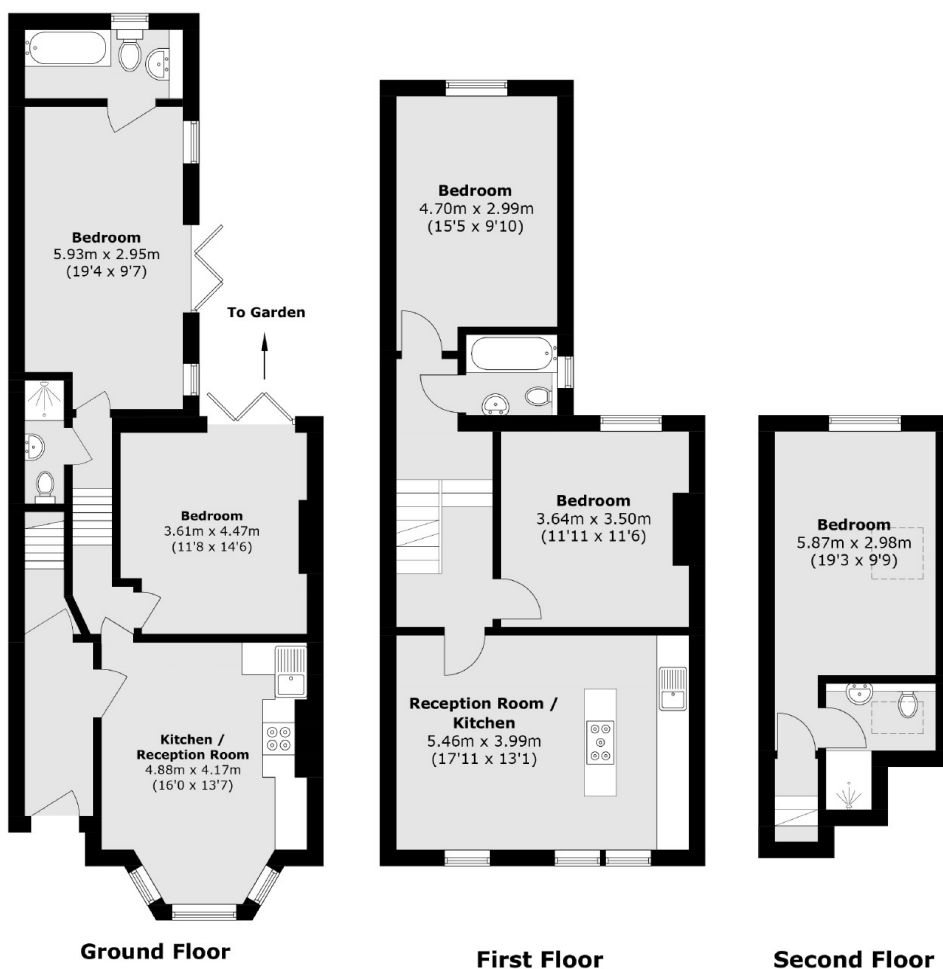
The property is located just off Greyhound Lane which is equidistant to both Streatham Common and Streatham mainline stations. Streatham High Road is a short walk and offers a vast choice when it comes to cafés, restaurants, bars

Features

- Five Double Bedrooms
- Over 1,570 Sq Ft
- Four Bathrooms
- Close to Station
- Potential to Extend
- No Onward Chain



Buckleigh Road, London, SW16



Total area (approx.): 145.9 sq. m (1,570.4 sq. ft)

Dexters

Streatham
105 Streatham Hill
London
SW2 4UG
Sales
020 8674 7400

Energy Rating: . We aim to make our particulars both accurate and reliable. However they are not guaranteed; nor do they form part of an offer or contract. If you require clarification on any points then please contact us, especially if you're traveling some distance to view. Please note that appliances and heating systems have not been tested and therefore no warranties can be given as to their good working order.

 **RICS** | Regulated
Estate Agent
and Letting Agent

[dexters.co.uk](https://www.dexters.co.uk)