



Elder Road, SE27

£550,000

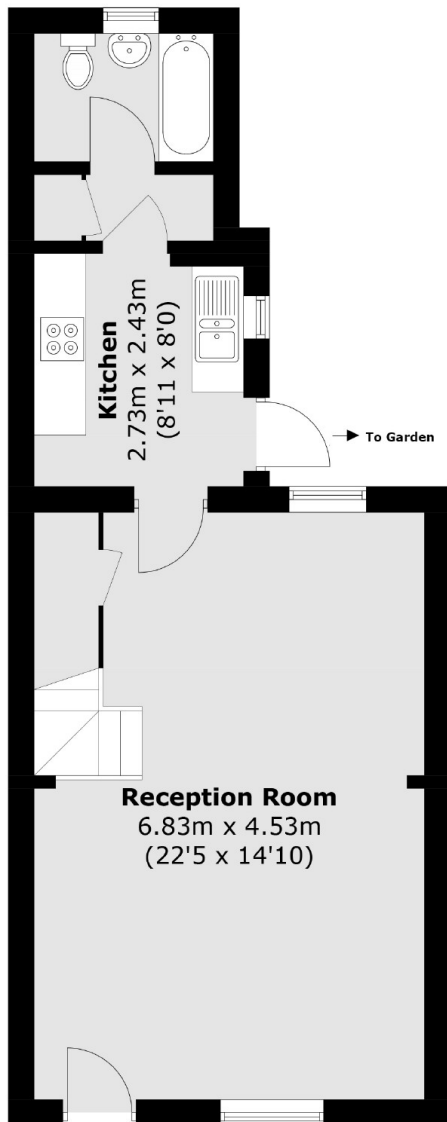
Offered with no onward chain is this three bedroom, quaint terraced home. With a large, open double reception this home has plenty of entertaining space. To the rear of the ground floor is the separate kitchen, bathroom and door onto the private garden. Upstairs there are three bedrooms all of which are doubles. This property is also offered with no onward chain.

Elder Road is a popular street, conveniently located within close proximity to Norwood High Street for its independent bars, restaurants and coffee shops. Your closest station is West Norwood Mainline offering rail links into the City.

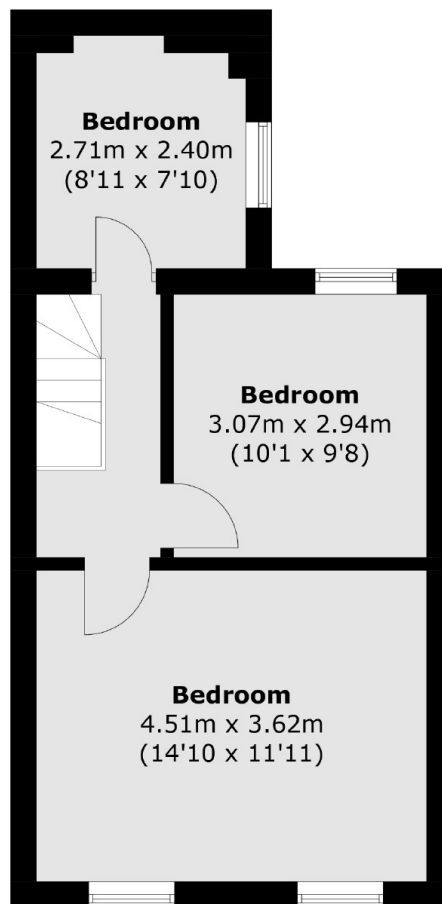
Features

- Three Double Bedrooms
- Terraced House
- Large Reception
- Separate Kitchen
- Chain Free
- Private Garden

Elder Road,
West Norwood, SE27



Ground Floor



First Floor

Total area (approx.): 82.0 sq. m (882.6 sq. ft)

Dexters

Streatham
105 Streatham Hill
London
SW2 4UG
Sales
020 8674 7400

Energy Rating: D. We aim to make our particulars both accurate and reliable. However they are not guaranteed; nor do they form part of an offer or contract. If you require clarification on any points then please contact us, especially if you're traveling some distance to view. Please note that appliances and heating systems have not been tested and therefore no warranties can be given as to their good working order.

 **RICS** | Regulated
Estate Agent
and Letting Agent

[dexters.co.uk](https://www.dexters.co.uk)