



## Holmewood Gardens, SW2

£1,950 Per calendar month

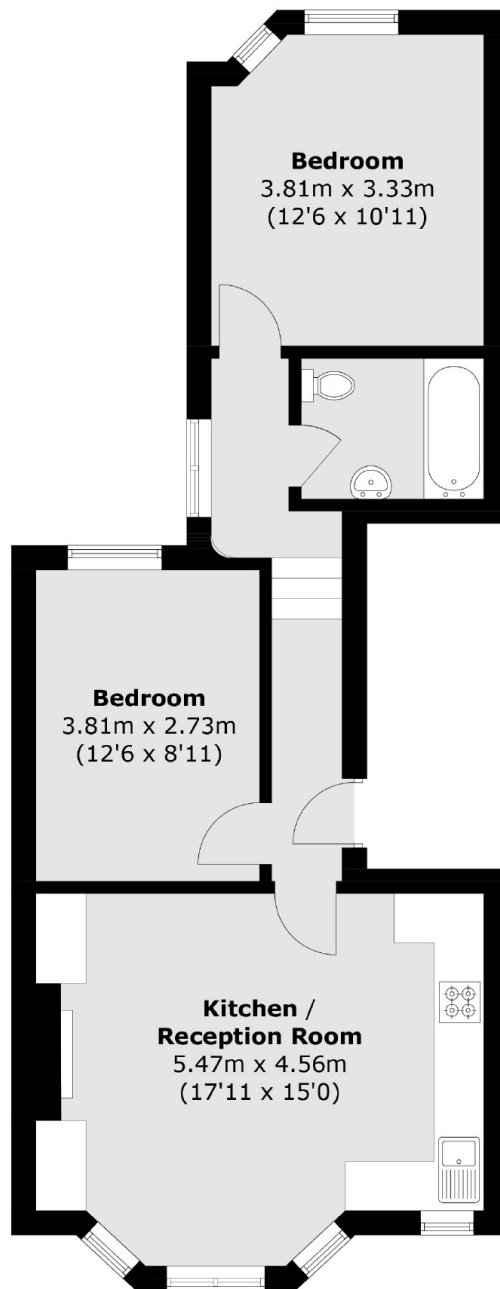
An ideally located two double bedroom first floor apartment, ideal for professional sharers. With a bright open plan kitchen/reception room.

Holmewood Gardens is a sought after location as it uniquely green, but in a convenient location. Transport is easily accessible from Streatham Hill, Tulse Hill & Brixton (Victoria Line)

### Features

- Two Double Bedrooms
- Open Plan Kitchen
- Period Conversion
- Modern Interior
- Sought After Location
- Modern Bathroom

# Holmewood Gardens, London, SW2



Total area (approx.): 57.7 sq. m (621.1 sq. ft)

## Dexters

Streatham  
105 Streatham Hill  
London  
SW2 4UG  
Lettings  
020 8674 8400

Energy Rating: . We aim to make our particulars both accurate and reliable. However they are not guaranteed; nor do they form part of an offer or contract. If you require clarification on any points then please contact us, especially if you're traveling some distance to view. Please note that appliances and heating systems have not been tested and therefore no warranties can be given as to their good working order.

 **RICS** | Regulated  
Estate Agent  
and Letting Agent

[dexters.co.uk](https://www.dexters.co.uk)