



Amesbury Avenue, SW2

£3,300 Per calendar month

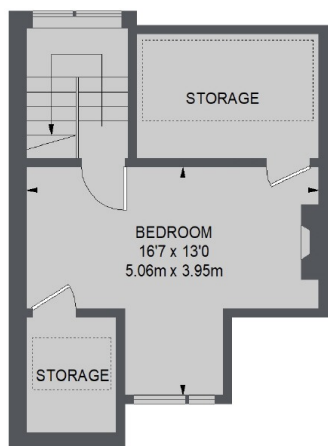
An immaculately designed four double bedroom home located on the "ABCD" Roads. This period home has plenty of entertaining space with a double reception room, separate kitchen and utility.

Amesbury Avenue is located just off Streatham Hill and forms part of the ABCD roads. Streatham Hill mainline station is a short walk away as well as lots of local restaurants and amenities. Brixton is also easily accessible.

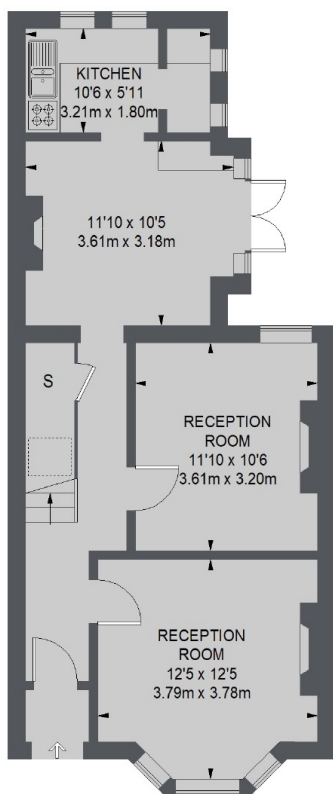
Features

Full House
Four Double Bedrooms
Double Reception
Modern Kitchen
Newly Refurbished
High Specification

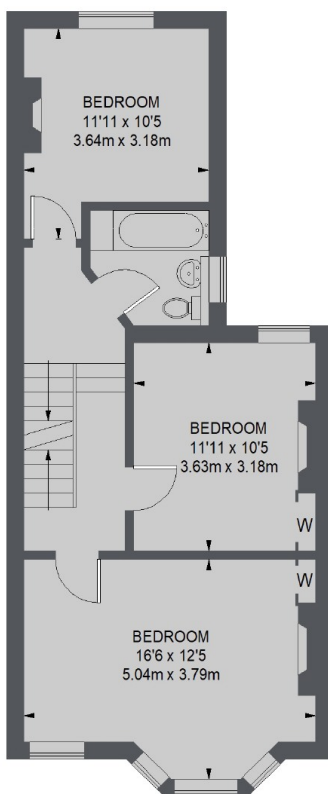
Amesbury Avenue, London, SW2



SECOND FLOOR



GROUND FLOOR



FIRST FLOOR

 = REDUCED HEADROOM BELOW 1.5 m / 5'0

TOTAL APPROX. FLOOR AREA
1489 SQ. FT. (138.35 SQ. M.)

Dexters

Streatham
105 Streatham Hill
London
SW2 4UG
Lettings
020 8674 8400

Energy Rating: E. We aim to make our particulars both accurate and reliable. However they are not guaranteed; nor do they form part of an offer or contract. If you require clarification on any points then please contact us, especially if you're traveling some distance to view. Please note that appliances and heating systems have not been tested and therefore no warranties can be given as to their good working order.

 **RICS** | Regulated
Estate Agent
and Letting Agent

[dexters.co.uk](https://www.dexters.co.uk)