



Leslie Park Road, CR0

£1,750 Per calendar month

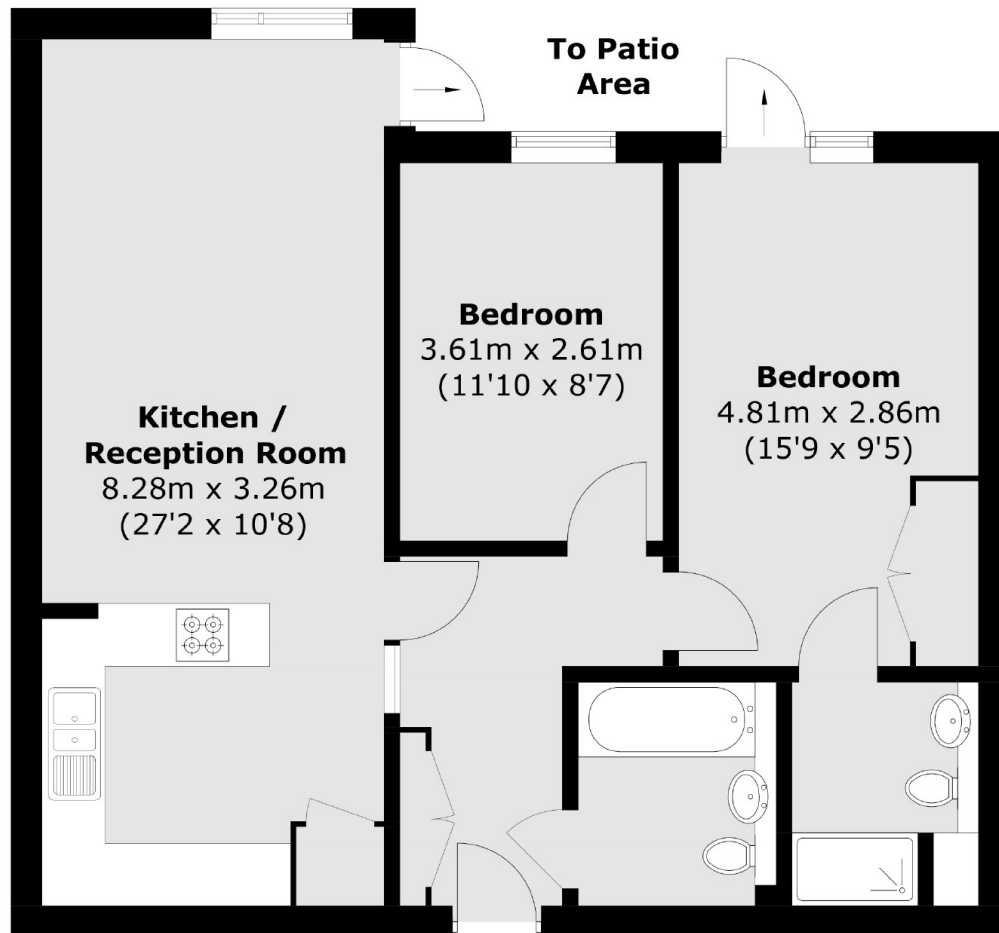
This bright and spacious two double bedroom flat is based on the ground floor with direct access to a private paved garden. The property has a large open plan kitchen reception, two bathrooms (one en-suite) and wood floor throughout.

Leslie Park Road is close to East Croydon Station and Boxpark Croydon. You also have several tram stops and all the local cafés, bars and restaurants that Croydon has to offer.

Features

- Two Double Bedrooms
- Two Bathrooms
- Private Outdoor Space
- Open Plan
- Wood Floor Throughout
- Gas Central Heating

Leslie Park Road,
Croydon, CR0



Total area (approx.): 67.6 sq. m (727.6 sq. ft)

Dexters

Streatham
105 Streatham Hill
London
SW2 4UG
Lettings
020 8674 8400

Energy Rating: C. We aim to make our particulars both accurate and reliable. However they are not guaranteed; nor do they form part of an offer or contract. If you require clarification on any points then please contact us, especially if you're traveling some distance to view. Please note that appliances and heating systems have not been tested and therefore no warranties can be given as to their good working order.

 **RICS** | Regulated
Estate Agent
and Letting Agent

dexters.co.uk