



Christchurch Road, SW2

£445,000

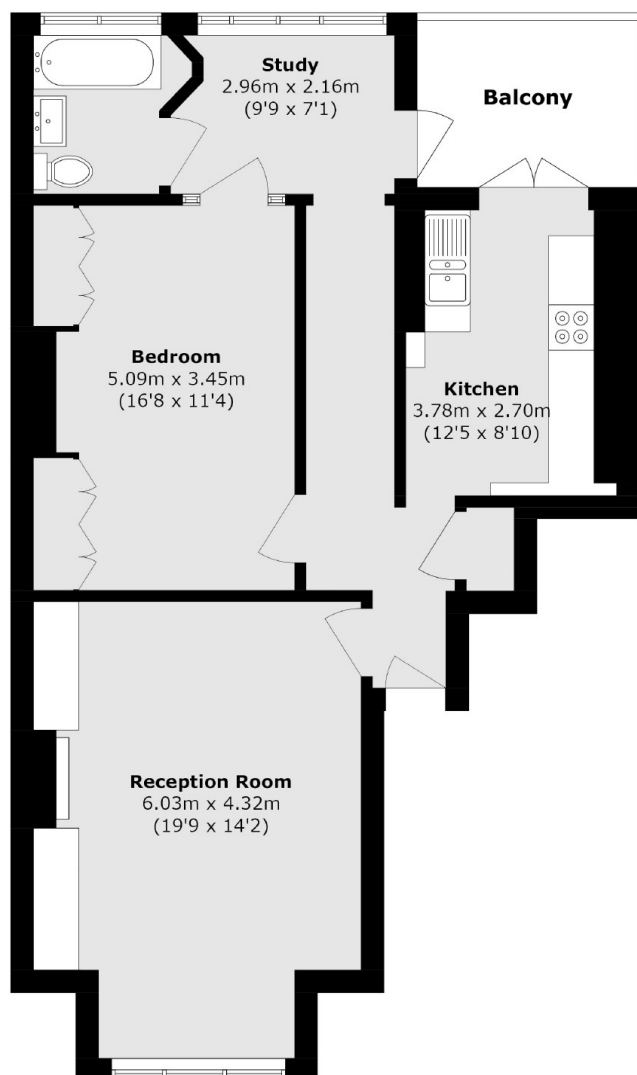
An exceptional one bedroom conversion flat located within an attractive Victorian house. Retaining much of its period detail this exquisite home has superb proportions with high ceilings, private balcony, useful office space and off street parking.

Christchurch Road is conveniently situated within easy reach of Tulse Hill station for rail links to several London mainline stations, and frequent buses to Brixton. The shops, bars and restaurants of Streatham Hill and Norwood Road are also just a short walk away.

Features

- One Double Bedroom
- Large Reception
- Separate Kitchen
- Study Space
- Modern Bathroom
- Balcony

Christchurch Road, London, SW2



Total area (approx.): 74.3 sq. m (799.7 sq. ft)

Balcony area (approx.): 6.5 sq. m (69.9 sq. ft)

Dexters

Streatham
105 Streatham Hill
London
SW2 4UG
Sales
020 8674 7400

Energy Rating: D. We aim to make our particulars both accurate and reliable. However they are not guaranteed; nor do they form part of an offer or contract. If you require clarification on any points then please contact us, especially if you're traveling some distance to view. Please note that appliances and heating systems have not been tested and therefore no warranties can be given as to their good working order.

 **RICS** | Regulated
Estate Agent
and Letting Agent

[dexters.co.uk](https://www.dexters.co.uk)