



Glencairn Road, SW16

£1,500 Per calendar month

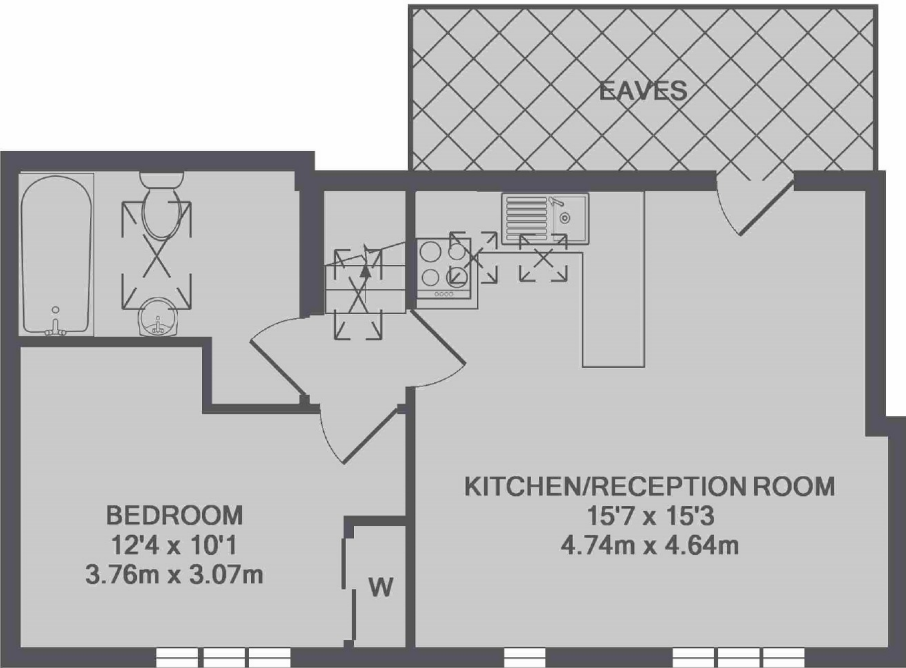
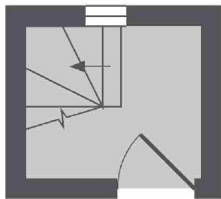
This one bedroom, top floor flat offers a good sized open plan kitchen/reception, a good sized double bedroom and a modern bathroom.

Glencairn Road is within close proximity to the open spaces of Streatham Common and also offers easy access to Streatham Common mainline station and various bus routes to the city.

Features

Top Floor Flat
One Bedroom
Eaves Storage
Open Plan Kitchen
Modern Bathroom

Glencairn Road,
London, SW16



1ST FLOOR

2ND FLOOR

TOTAL APPROX. FLOOR AREA 466 SQ.FT. (43.3 SQ.M.)

Dexters

Streatham
105 Streatham Hill
London
SW2 4UG
Lettings
020 8674 8400

Energy Rating: D. We aim to make our particulars both accurate and reliable. However they are not guaranteed; nor do they form part of an offer or contract. If you require clarification on any points then please contact us, especially if you're traveling some distance to view. Please note that appliances and heating systems have not been tested and therefore no warranties can be given as to their good working order.



dexters.co.uk