



Leithcote Gardens, SW16

£860,000

Dexters



Leithcote Gardens, SW16

An attractive and extended four bedroom terraced house. Perfectly positioned off Streatham Hill this property has plenty of entertaining and living space for a growing family.

This well-maintained and neutrally presented family home has a delightful sense of space. Retaining many of its original period features the accommodation comprises a separate reception room to the front, and an open large kitchen / dining room with rear opening onto a sunny and secluded garden which can be further extended into. There is also an additional communal garden running the length of the terrace, exclusively accessible and maintained by residents who use this as an additional play area for their young families including a nature trail and growing vegetables. Upstairs, three bedrooms are arranged over the first floor and are served by a family bathroom. The fourth bedroom, within the converted loft space is naturally bright and benefits from built in storage and en-suite.

Leithcote Gardens is an attractive residential road within close proximity of Streatham Hill. It is within easy reach of Streatham High Road offering excellent transport links and a wonderful selection of shops, bars and restaurants. Dunraven school is also within walking distance.

Features

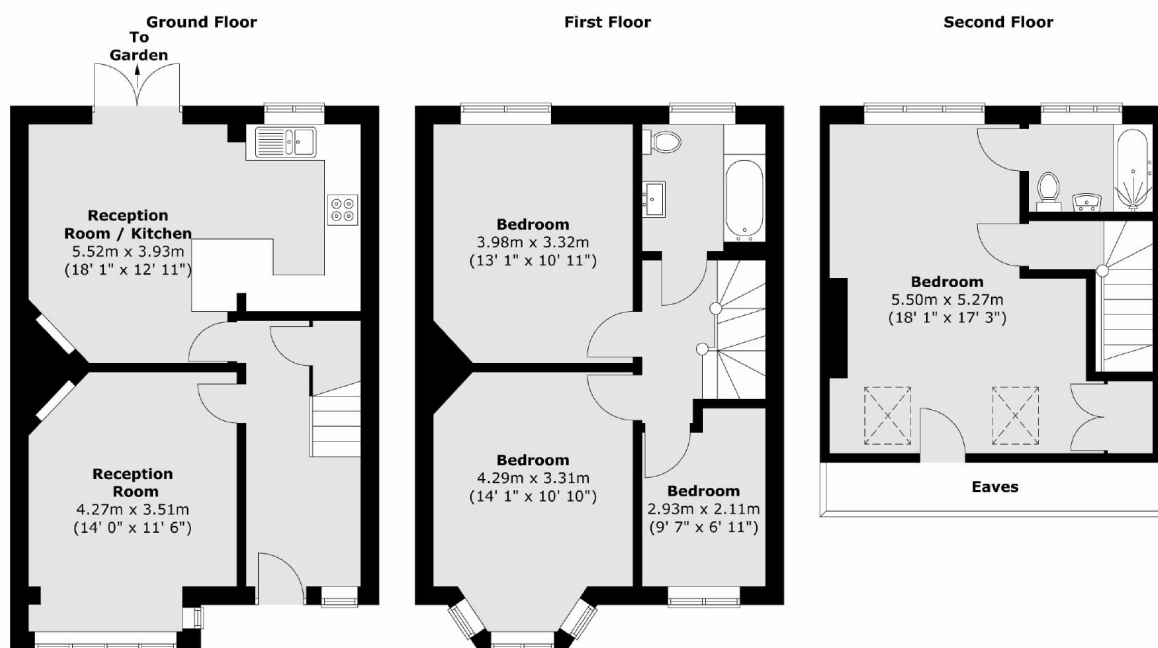
- Four Bedrooms
- Off Street Parking
- Large Mature Garden
- Quiet Location







Leithcote Gardens, London, SW16



Total area (approx.) : 116.9 sq. m (1258 sq. ft)
(Excluding eaves)