



Besley Street, SW16

£425,000

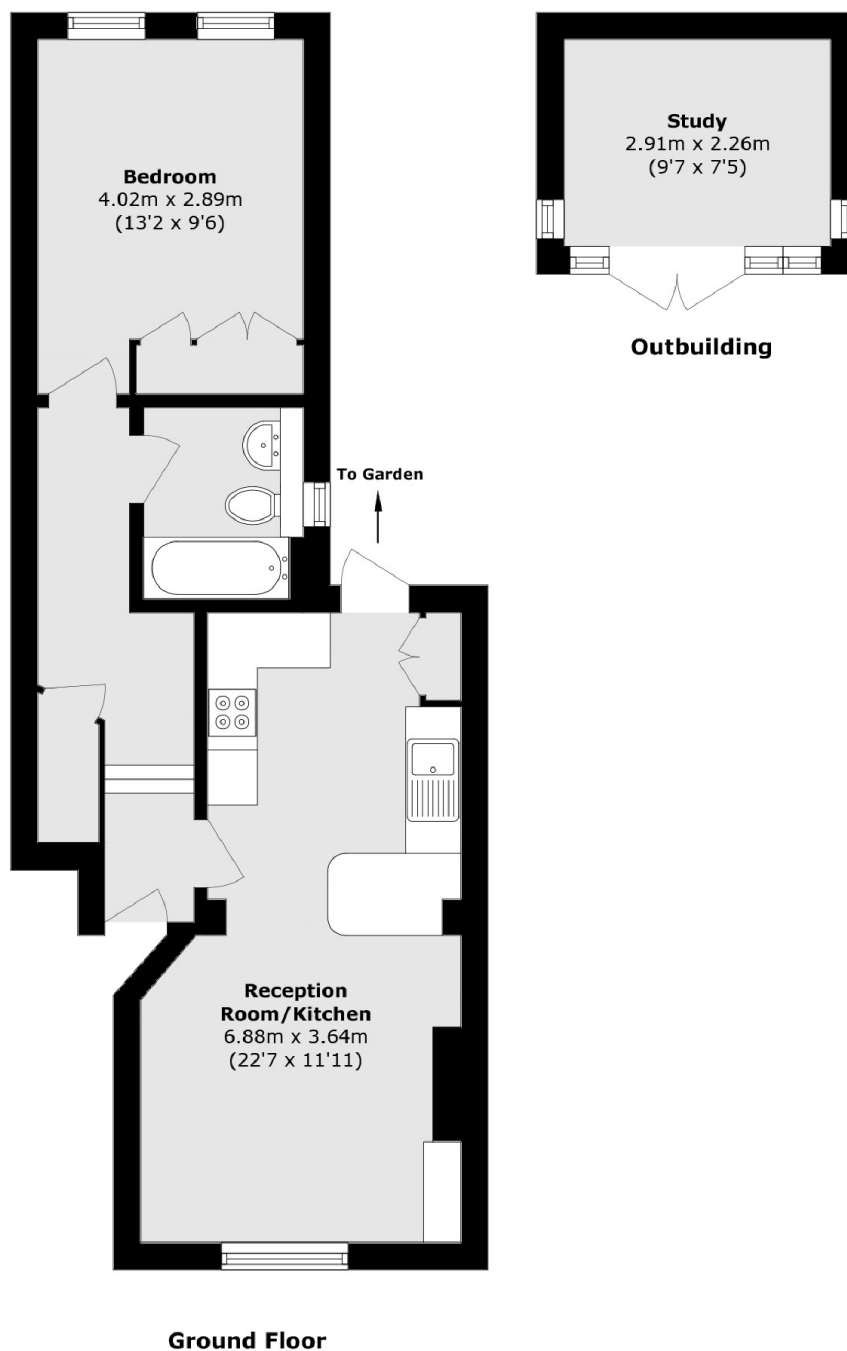
This beautifully presented bright one double bedroom period property is the perfect first time buy. In immaculate condition throughout, the property offers a large kitchen/living room, a private garden and also benefits from a long lease.

Besley Street is walking distance to Streatham Common Station which has links into London Victoria via Clapham Junction. Both Streatham and Tooting Bec Common are also nearby.

Features

- Garden Office
- Double Bedroom
- Private Garden
- Immaculate Condition
- Period Conversion
- Open Plan Kitchen/Living

Besley Street, London, SW16



Total area (approx.): 45.4 sq. m (488.6 sq. ft)
Outbuilding (approx.): 6.5 sq. m (69.9 sq. ft)