



Leigham Court Road, SW16
£725,000

Dexters



Leigham Court Road, SW16

Rare to the market is this three bedroom penthouse apartment located near the top of Leigham court road, providing views of the whole London skyline. This incredible home features a large, modern and open plan living space with remarkable views and direct access onto the wrap around terrace. The main bedroom provides the luxurious feel with large en-suite with freestanding tub and private access to the terrace as well as built in wardrobes.

The two further bedrooms are both doubles with one being used as a study, these are all serviced by the modern bathroom. The flat is accessed via the lift and is the only flat on this floor creating the complete feel of privacy. The wrap around terrace is truly the wow factor with 360 degree views over Canary Wharf, the City and towards Surrey.

Leigham Court Road is conveniently located within a short walk of Streatham Hill, West Norwood and Tulse Hill Station, providing links into London Victoria, Blackfriars and London Bridge. There are also many bus routes which run into Central London and Brixton. The green open space of Streatham Common is also a short walk away which is home to The Rookery.

Features

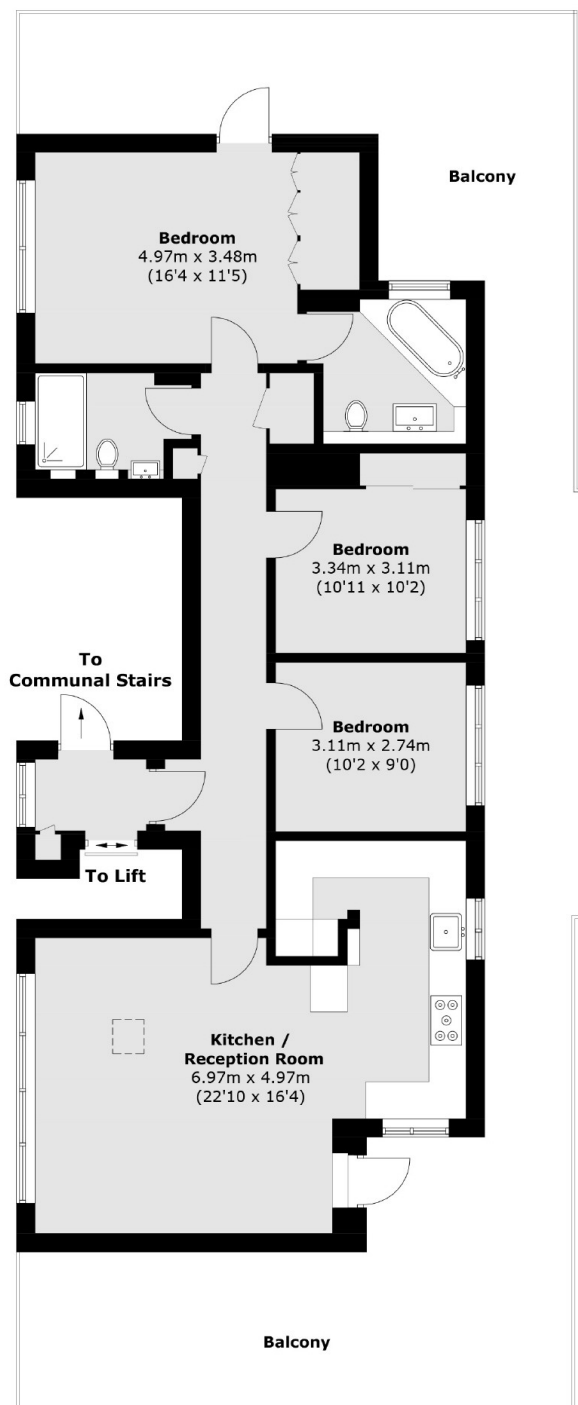
- Three Bedrooms
- Incredible Views
- Penthouse Apartment
- Garage
- Modern Interior
- Large Terrace







Leigham Court Road, London, SW16



Total area (approx.): 98.2 sq. m (1,057.0 sq. ft)
Balcony: 75.6 sq. m (813.7 sq. ft)