



## Madeira Road, SW16

### £300,000

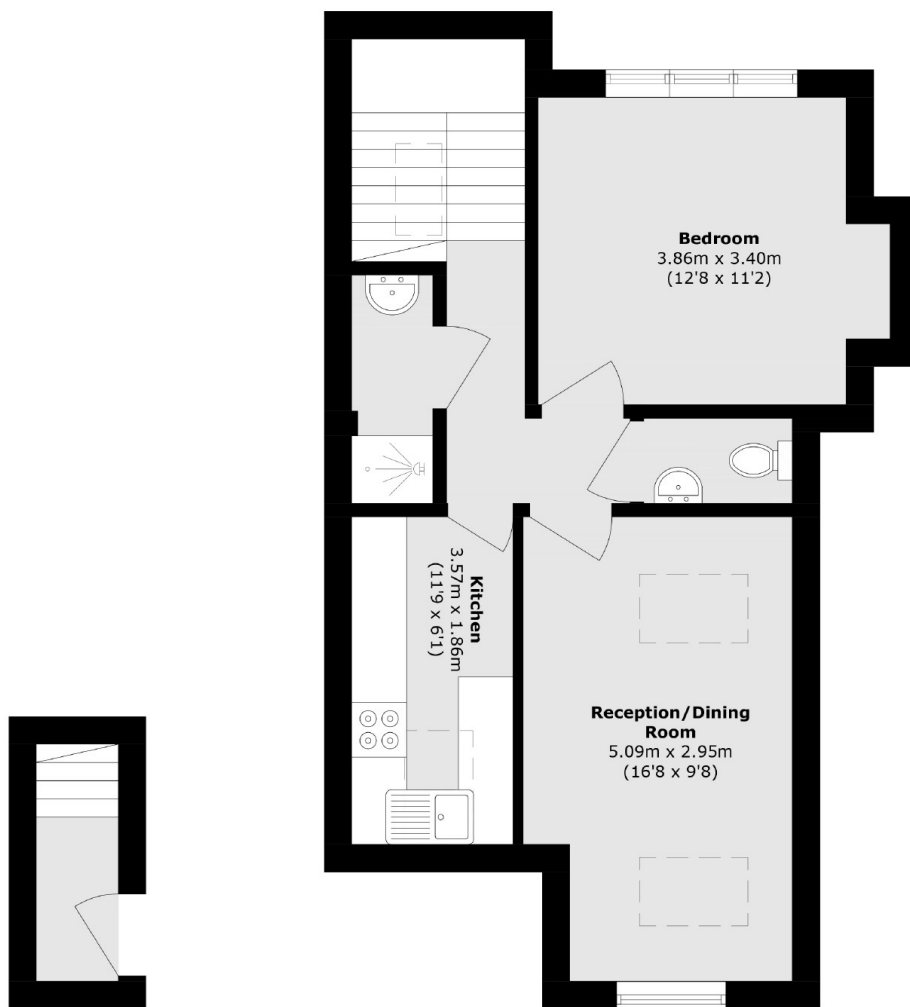
Located on the top floor of this period conversion is this one double bedroom property. This home has a combined living and dining room as well as a separate kitchen and spacious bedroom. This is all serviced by a neutral shower room.

Madeira Road is a tree lined street allowing free parking and is only a short walk from Streatham mainline which offers frequent services to London Bridge and the City. The property is situated within walking distance to Streatham High Road with its shops, cafes, restaurants and bars, as well as Streatham Common.

### Features

- One Double Bedroom
- Top Floor Flat
- No onward Chain
- Separate Kitchen
- Close to Station
- Quiet Location

# Madeira Road, London, SW16



**Ground Floor**

**First Floor**

Total area (approx.): 49.3 sq. m (530.6 sq. ft)

## Dexters

Streatham  
105 Streatham Hill  
London  
SW2 4UG  
Sales  
020 8674 7400

Energy Rating: D. We aim to make our particulars both accurate and reliable. However they are not guaranteed; nor do they form part of an offer or contract. If you require clarification on any points then please contact us, especially if you're traveling some distance to view. Please note that appliances and heating systems have not been tested and therefore no warranties can be given as to their good working order.

 **RICS** | Regulated  
Estate Agent  
and Letting Agent

[dexters.co.uk](https://www.dexters.co.uk)