



Streatham High Road, SW16

£399,999

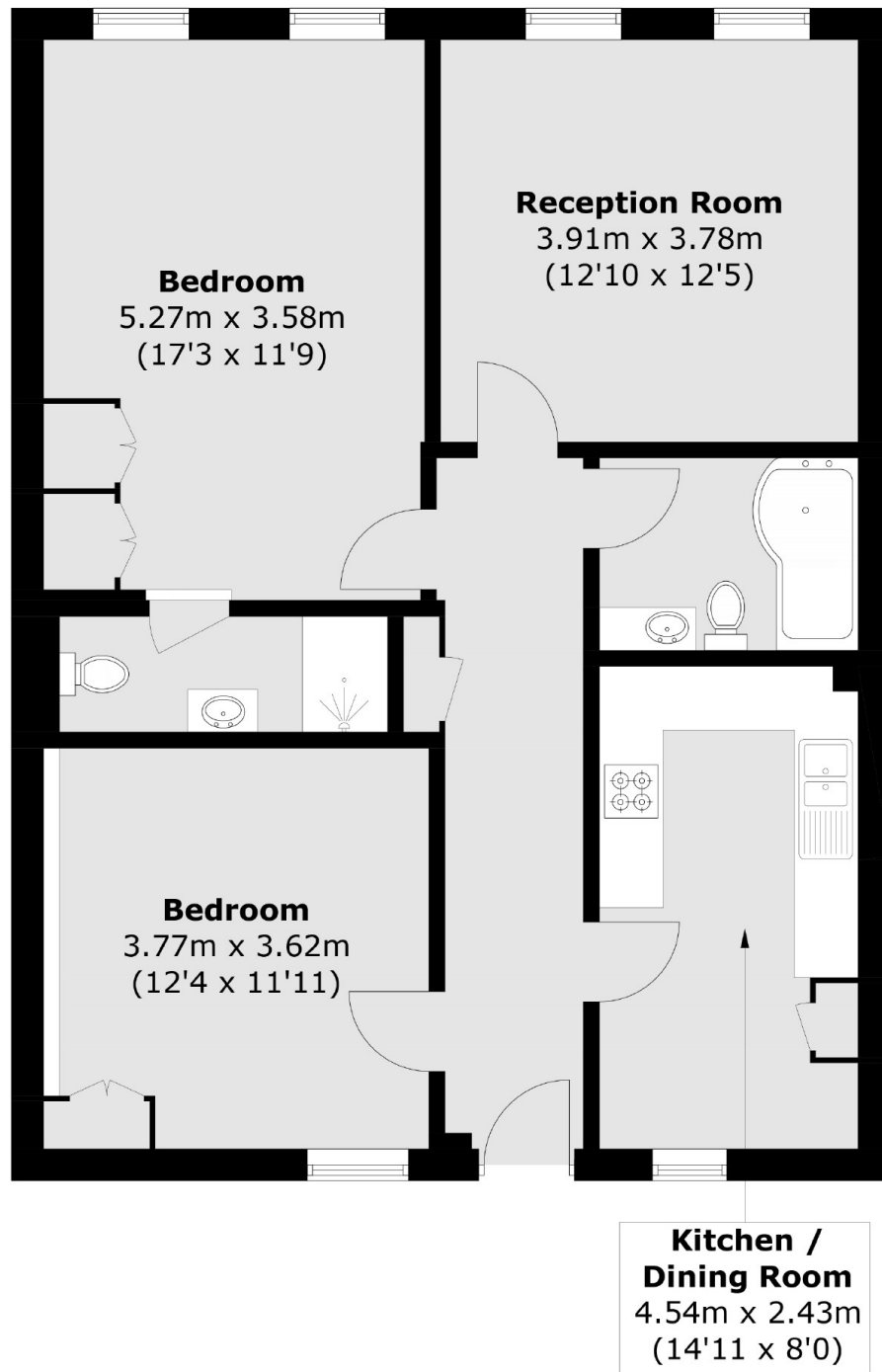
At over 860 sqft is this two double bedroom, two bathroom lateral flat. With plenty of space throughout this home has a spacious kitchen diner, separate reception and large hallway. Both bathrooms have been modernised and wardrobes have been fitted in both bedrooms. There is also a communal roof terrace accessed just off the entrance to the property.

This property is within walking distance of Norbury station which provides mainline links into London Victoria and London Bridge. The eating, drinking and shopping choices are within easy reach, as are the open spaces and recreational facilities of Norbury Park.

Features

- Two Large Bedrooms
- Close to Station
- Separate Kitchen/Diner
- Communal Roof Terrace
- Two Bathrooms
- Triple Glazed Front Windows

Streatham High Road, London, SW16



Total area (approx.): 79.9 sq. m (860.0 sq. ft)

Dexters

Streatham
105 Streatham Hill
London
SW2 4UG
Sales
020 8674 7400

Energy Rating: C. We aim to make our particulars both accurate and reliable. However they are not guaranteed; nor do they form part of an offer or contract. If you require clarification on any points then please contact us, especially if you're traveling some distance to view. Please note that appliances and heating systems have not been tested and therefore no warranties can be given as to their good working order.

 **RICS** | Regulated
Estate Agent
and Letting Agent

[dexters.co.uk](https://www.dexters.co.uk)