



Beechcroft Close, SW16

£210,000

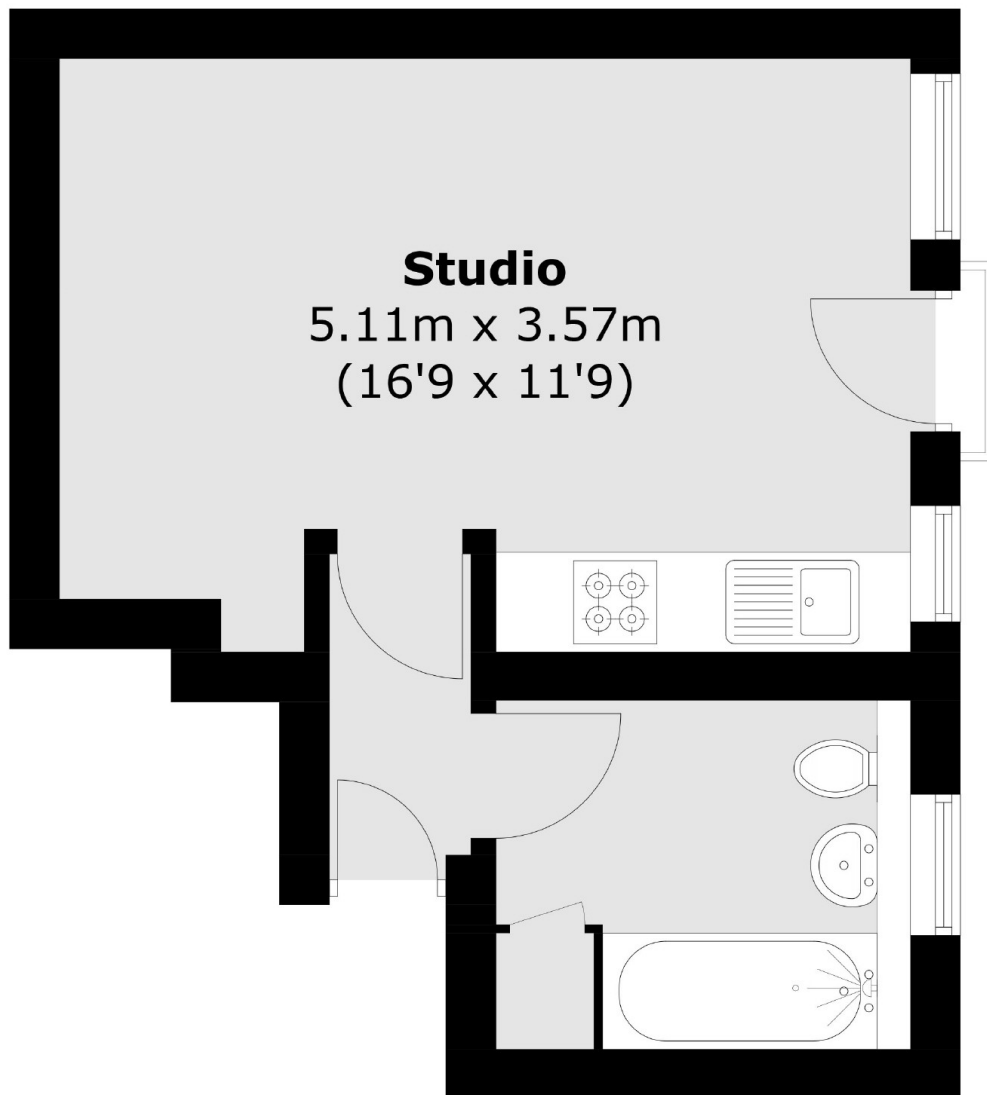
This modern studio apartment is the perfect first time buy. The property is set within this gated development and has the benefit of an allocated parking space, communal grounds and is also being offered to the market with no onward chain.

Surrounded by well kept communal gardens Beechcroft close is conveniently located within easy reach of Streatham mainline station providing links to London Bridge and Blackfriars. Frequent bus services are also available to Brixton town centre and the surrounding areas.

Features

- Gated Development
- Modern
- Communal Gardens
- Allocated Parking Space
- No Onward Chain
- Convenient Location

Beechcroft Close, London, SW16



Total area (approx.): 25.3 sq. m (272.3 sq. ft)