



Streatham High Road, SW16

£400,000

Dexters



Streatham High Road, SW16

At over 670 Sq Ft, this two bedroom, top floor flat is the perfect first time purchase. With far reaching views, this property benefits from two double bedrooms, a large living room with stunning views, modern kitchen and bathroom as well as a communal garden .

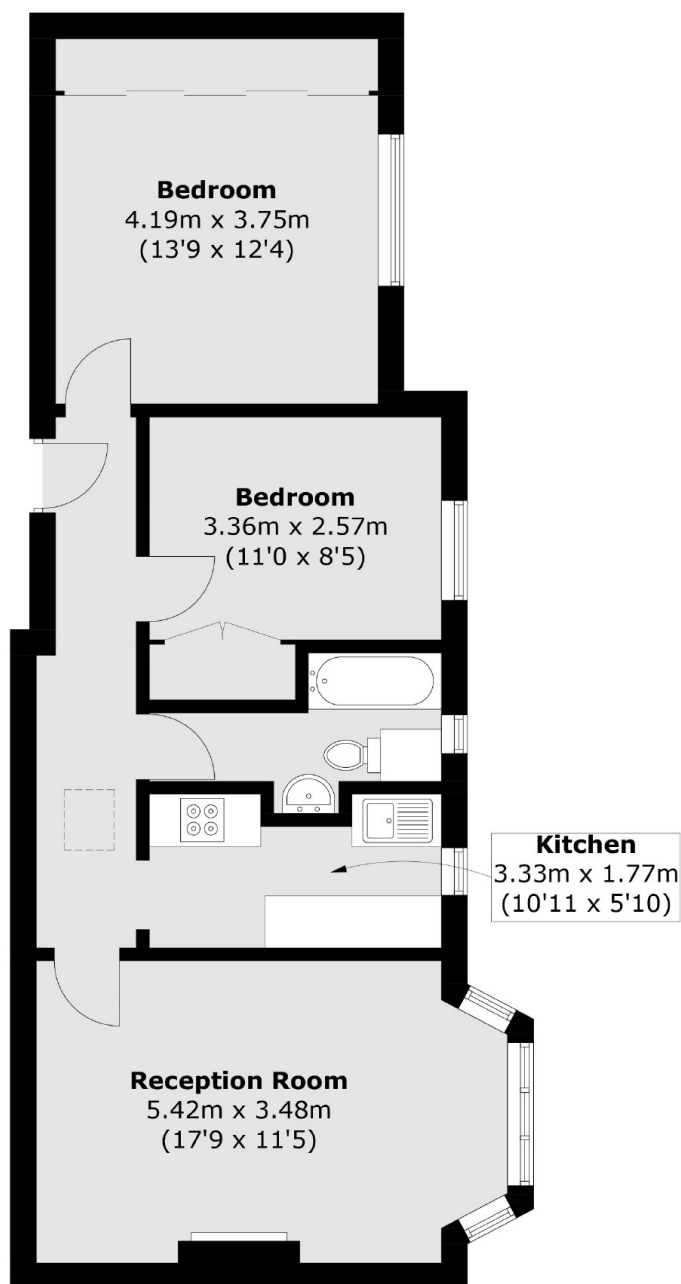
Perfectly positioned along Streatham High Road, The High is located within close proximity to both Streatham Hill and Streatham mainline stations and bus routes offering a quick and easy route into Brixton.

Features

- Over 670 Sq Ft
- Far Reaching Views
- Convenient Location
- Two Double Bedrooms
- Separate Kitchen
- Communal Gardens



Streatham High Road, London, SW16



Second Floor

Total area (approx.): 62.8 sq. m (676.0 sq. ft)