



Lydhurst Avenue, SW2
£565,000

Dexters



Lydhurst Avenue, SW2

A beautifully presented two bedroom maisonette with its own front door and private garden. Internally the property has the feel of a house, with separate kitchen diner, front facing reception and split-level accommodation.

This home has a bright reception with space for a dining table. The kitchen/diner to rear leads through to the garden and neutrally decorated bathroom. Period features are found throughout the property and the main bedroom has been knocked into the eaves, creating some more space, whilst still leaving some storage space. Although not demised to the flat, on this level you have access to a sunny roof terrace. This property is also being offered with no onward chain.

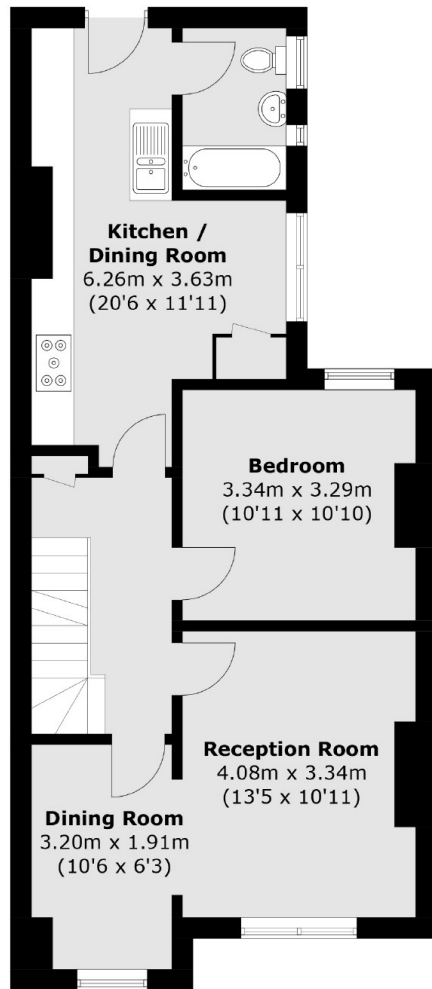
Lydhurst Avenue is conveniently located within easy reach of Streatham Hill and Tulse Hill mainline station offering rail links to London Victoria (via Clapham Junction) and London Bridge. At the end of the road is Streatham High Road which has a range of shops and restaurants.

Features

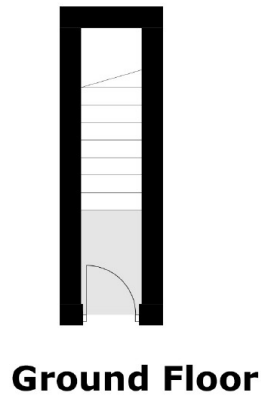
- Two Bedrooms
- Roof Terrace
- Great Condition
- Chain Free
- Private Garden
- Separate Kitchen Diner



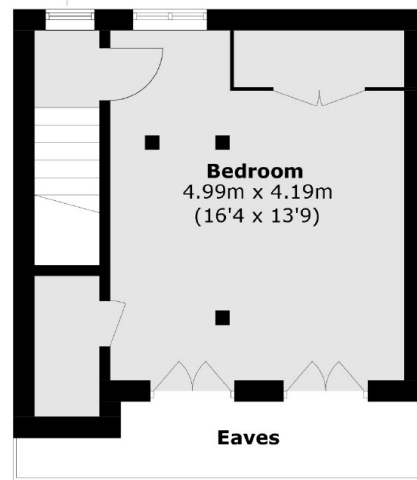
Lydhurst Avenue, London, SW2



First Floor



Access to Terrace



Second Floor

Total area (approx.): 92.1 sq. m (991.4 sq. ft)
(Excluding Eaves)