



Eardley Road, SW16

£2,150 Per calendar month

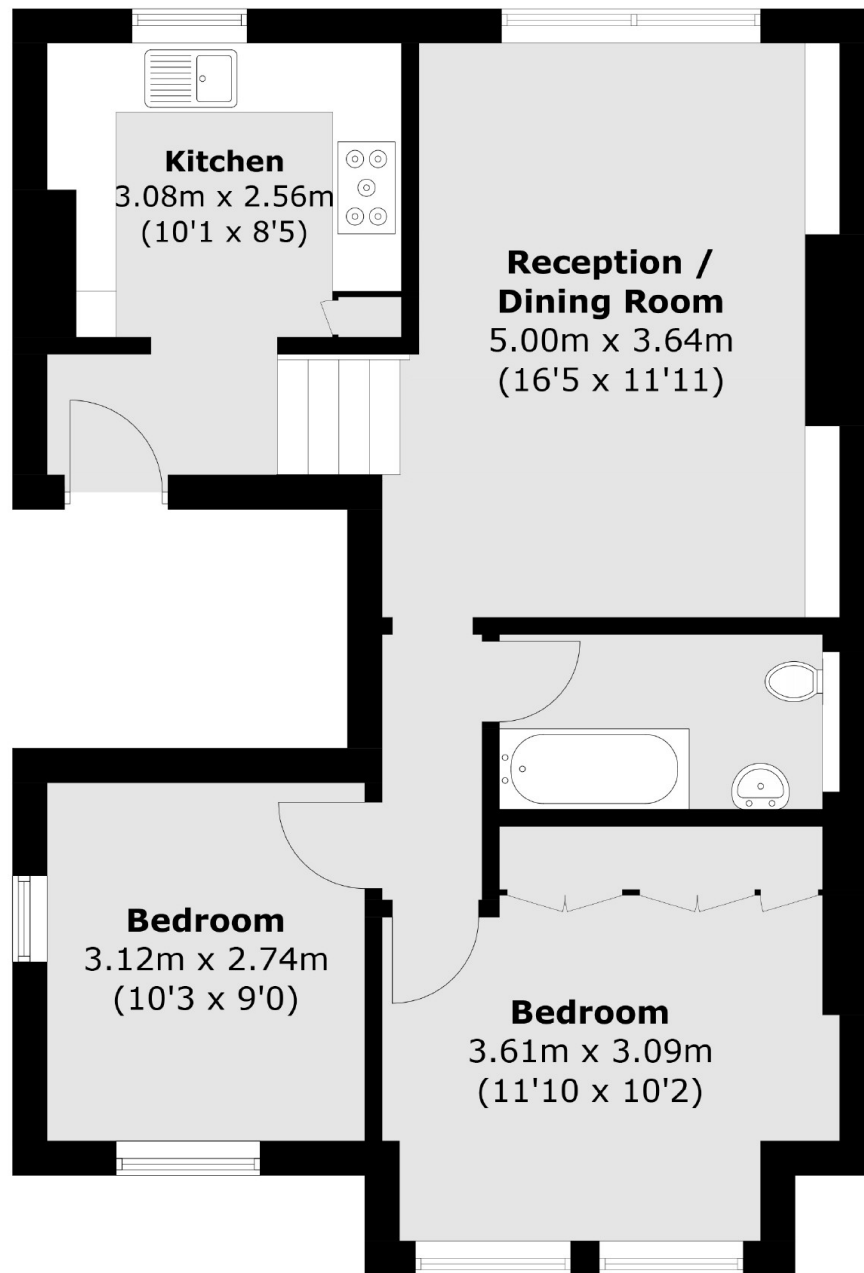
This two bedroom flat has been finished to a good standard throughout. Offering two double bedrooms, separate kitchen and a large living space. The property is perfect for two professionals or couple.

Situated close to Streatham Common station offering a quick commute to Balham, Clapham Junction, London Victoria and London Bridge. Also within walking distance of Streatham Common itself, as well as the local shops, bars and restaurants of Streatham High Road.

Features

- Two Double Bedrooms
- Private Garden
- Off Street Parking
- Separate Kitchen
- Built In Storage
- Large Living Area

Eardley Road,
London, SW16



Total area (approx.): 60.9 sq. m (655.5 sq. ft)

Dexters

Streatham
105 Streatham Hill
London
SW2 4UG
Lettings
020 8674 8400

Energy Rating: D. We aim to make our particulars both accurate and reliable. However they are not guaranteed; nor do they form part of an offer or contract. If you require clarification on any points then please contact us, especially if you're traveling some distance to view. Please note that appliances and heating systems have not been tested and therefore no warranties can be given as to their good working order.

 **RICS** | Regulated
Estate Agent
and Letting Agent

[dexters.co.uk](https://www.dexters.co.uk)