



Streatham High Road, SW16

£425,000

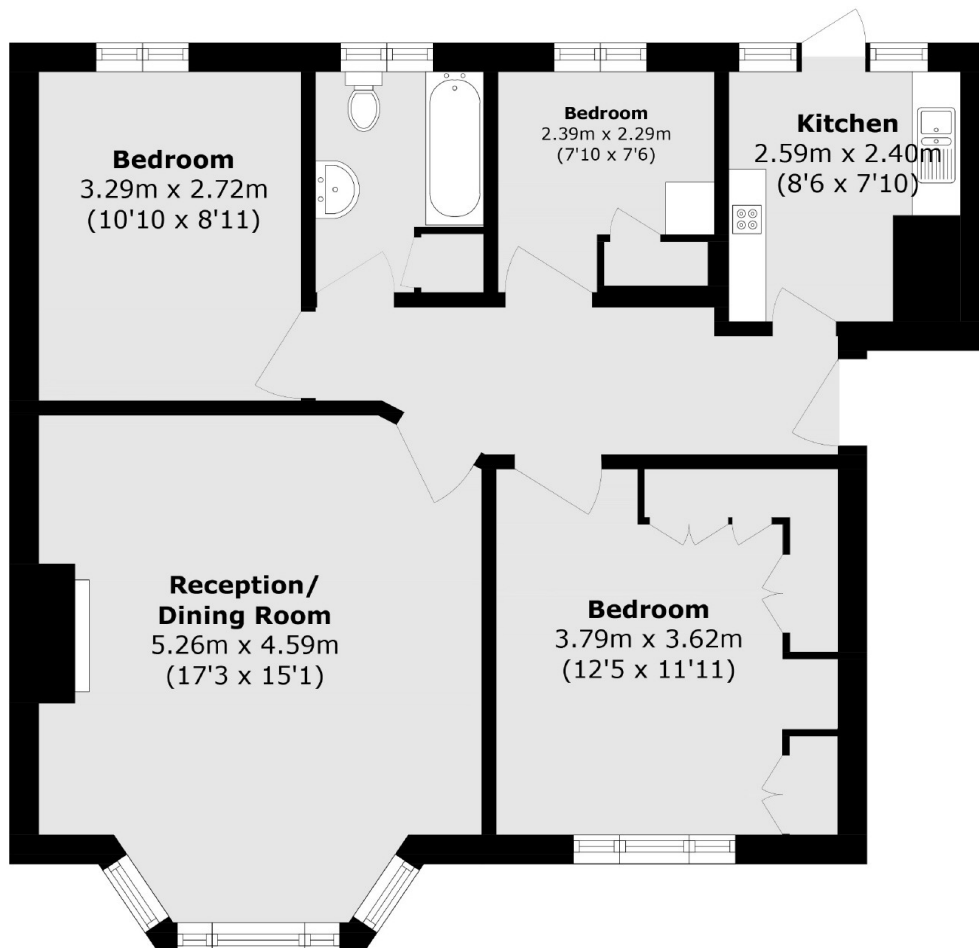
At over 763 Sq Ft, this three bedroom flat is spacious and bright throughout. This lovely property has a large reception room, a separate kitchen and plenty of storage throughout. The property is also being offered to the market with no onward chain.

Located towards the Streatham Hill Station end of the high road, Streatham Court it is perfectly positioned with an array of shops, bars and restaurants on your door step. Frequent bus routes provide quick and easy access to Brixton and surrounding areas.

Features

- Three Bedrooms
- South After Location
- Over 763 Sq Ft
- Separate Kitchen
- Large Reception Room
- No Onward Chain

Streatham High Road, London, SW16



Total area (approx.): 70.9 sq. m (763.1 sq. ft)

Dexters

Streatham
105 Streatham Hill
London
SW2 4UG
Sales
020 8674 7400

Energy Rating: C. We aim to make our particulars both accurate and reliable. However they are not guaranteed; nor do they form part of an offer or contract. If you require clarification on any points then please contact us, especially if you're traveling some distance to view. Please note that appliances and heating systems have not been tested and therefore no warranties can be given as to their good working order.

 **RICS** | Regulated
Estate Agent
and Letting Agent

[dexters.co.uk](https://www.dexters.co.uk)