



**Besley Street, SW16**  
**£725,000**

**Dexters**



## Besley Street, SW16

Located on a quiet residential street, this four bedroom home is perfect for a growing family. Greeted by a large entrance hallway leading through to the open living plan area with separate yet open kitchen, this home provides plenty of space for entertaining. Sliding double doors lead you through to the landscaped garden with both decked and grassed area.

Upstairs on the first floor are two large double bedrooms and a third smaller bedroom that can be used as a nursery or study, all serviced by a modern family bathroom. The top floor has been converted to create a primary bedroom with en-suite shower room as well as eaves storage.

Besley Street is a quiet residential road perfectly positioned for Streatham Common mainline station, providing frequent links to Victoria and London Bridge. Both Streatham and Tooting Common are within walking distance and the road sits under the borough of Wandsworth and has free on-street parking. Independent cafes and shops are only a short walk away on Moyser Road, and other local amenities including Sainsbury's Local are nearby on both Mitcham Lane and Greyhound Lane. The area is also very well served by a number of excellent schools.

### Features

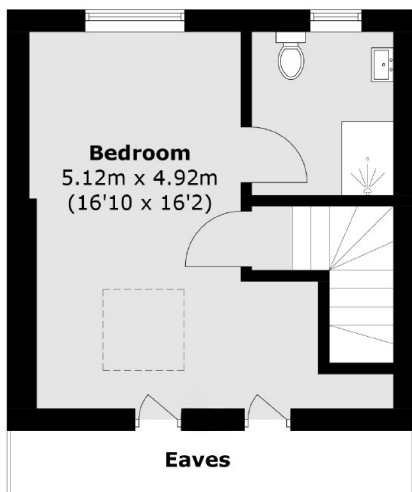
- Four Bedrooms
- Semi-detached
- Two Bathrooms
- Large Garden
- Chain free
- Close to Station



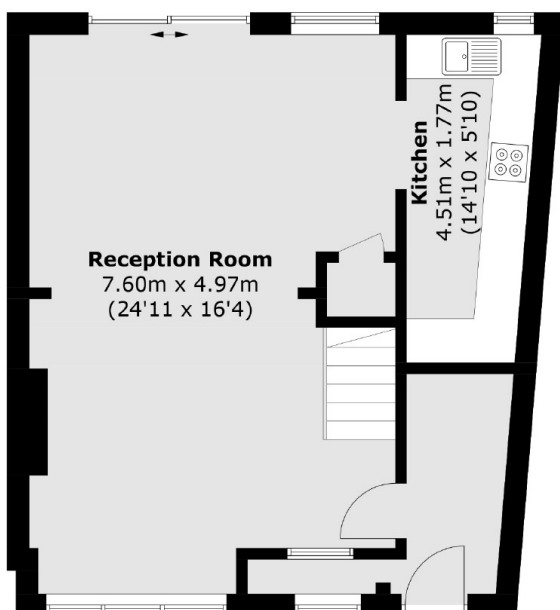




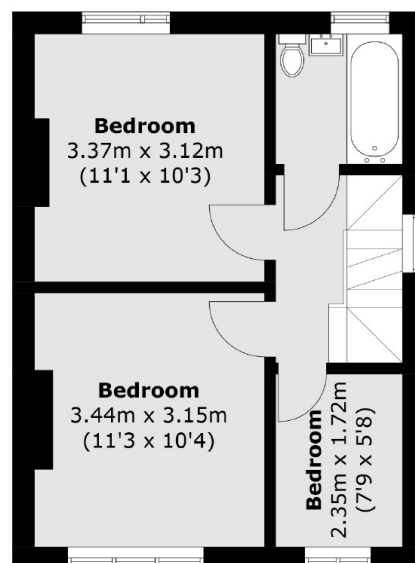
# Besley Street, London, SW16



**Second Floor**



**Ground Floor**



**First Floor**

Total area (approx.): 111.0 sq. m (1,194.8 sq. ft)  
(Excluding Eaves)