



Harborough Road, SW16

£1,650 Per calendar month

A great one bedroom maisonette presented in superb condition throughout, offering an open plan living/ kitchen area and a private garden. Perfect for a professional couple or single.

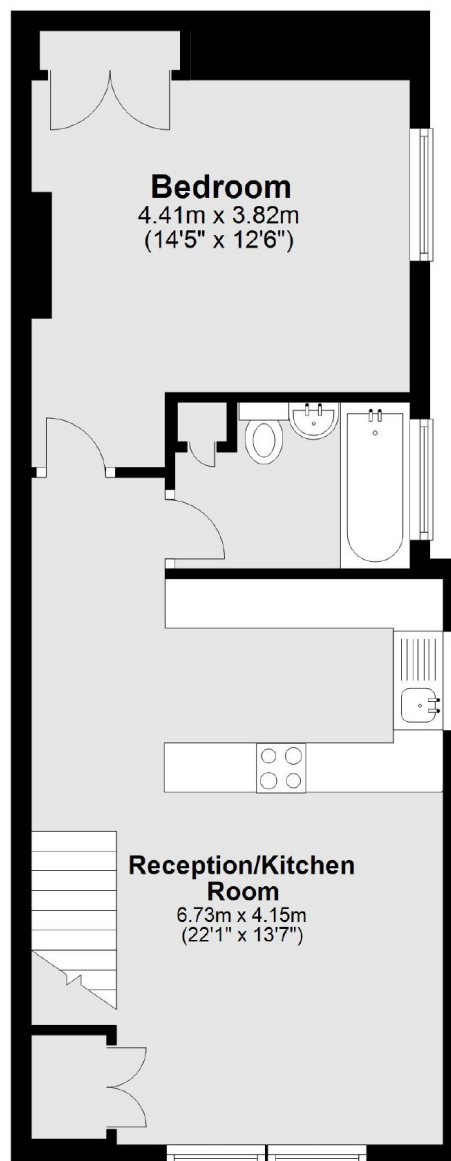
Harborough Road is a quiet tree-lined residential road within easy reach of Streatham High Road and local transport links include Streatham Station (National Rail) and Streatham Hill Station (National Rail).

Features

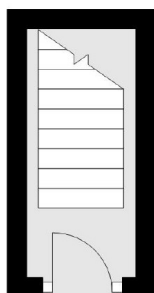
- One Bedroom Flat
- Open Plan Living/ Kitchen Area
- Private Garden
- Excellent Location
- Spacious
- Modern

Harborough Road,
London, SW16

First Floor



Ground Floor



Total area: approx. 47.6 sq. metres (511.9 sq. feet)

Dexters

Streatham
105 Streatham Hill
London
SW2 4UG
Lettings
020 8674 8400

Energy Rating: C. We aim to make our particulars both accurate and reliable. However they are not guaranteed; nor do they form part of an offer or contract. If you require clarification on any points then please contact us, especially if you're traveling some distance to view. Please note that appliances and heating systems have not been tested and therefore no warranties can be given as to their good working order.

 **RICS** | Regulated
Estate Agent
and Letting Agent

dexters.co.uk