



Besley Street, SW16

£2,100 Per calendar month

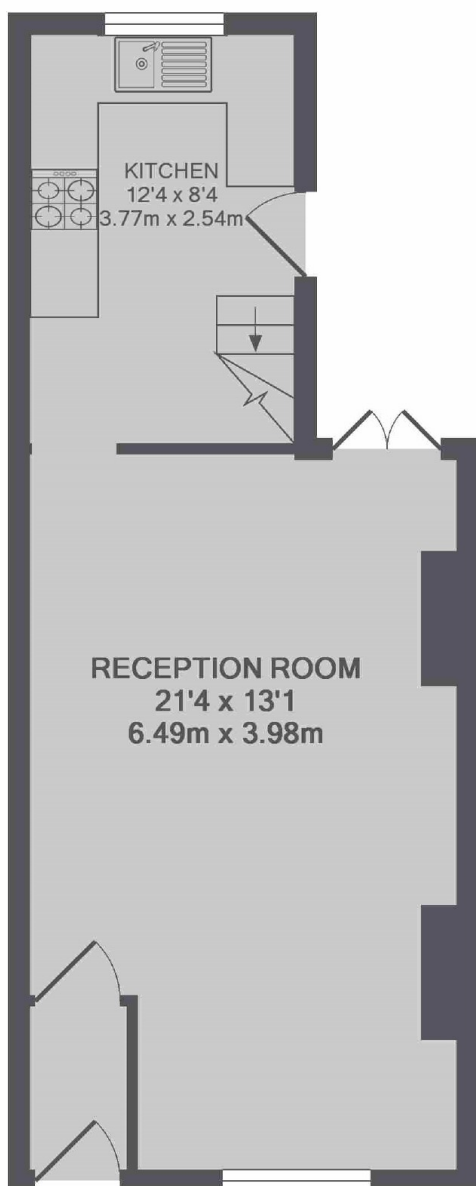
A well-presented two bedroom cottage that has a large double reception room that leads to the kitchen and private garden. On the top floor (first floor) you have two double bedroom and family bathroom. Perfect for families, couples or sharers. Wandsworth Council Tax.

Besley Street is located in Streatham near to both Streatham Common and Tooting Bec Common with easily accessible green open spaces, bars and restaurants nearby.

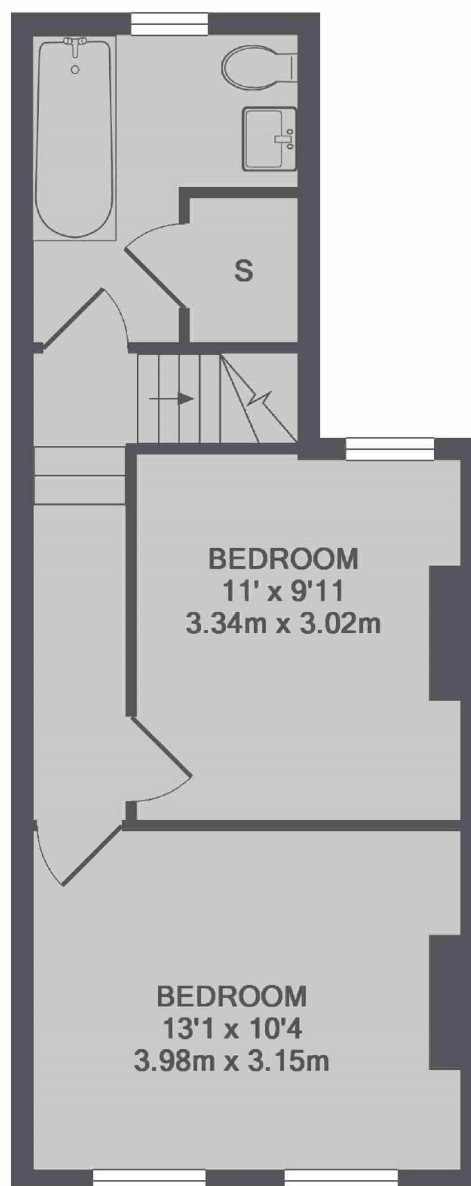
Features

- Two Bedroom House
- Large Reception/Dining Room
- Modern Kitchen
- Private Garden
- Prime Location
- Close to Station

Besley Street,
London, SW16



GROUND FLOOR



1ST FLOOR

TOTAL APPROX. FLOOR AREA 762 SQ.FT. (70.8 SQ.M.)