



**Leverson Street, SW16**

**£800,000**

**Dexters**



## Leverson Street, SW16

An end of terrace, three double bedroom, beautifully designed home. With separate grand, yet cosy reception this home opens into an inviting space whilst the rear kitchen diner is a great entertaining space with bi-fold doors onto the garden, housing an outdoor bbq area.

Upstairs there are two double bedrooms flooded with natural light. On this floor is also a four piece bathroom suite that has been thoroughly thought out by the current owners. The top floor is truly a peaceful space with sliding door and Juliet balcony, en-suite shower room and large bedroom with study or lounging area as well as built in wardrobe space.

Leverson Street is a quiet residential street offering easy access to Streatham Common Station, which has regular services into London Victoria via Clapham Junction and also London Bridge. It's also a short walk to the Furzedown cafes and shops on Moyser Road and excellent schools. Both Streatham and Tooting Bec Commons are also nearby.

### Features

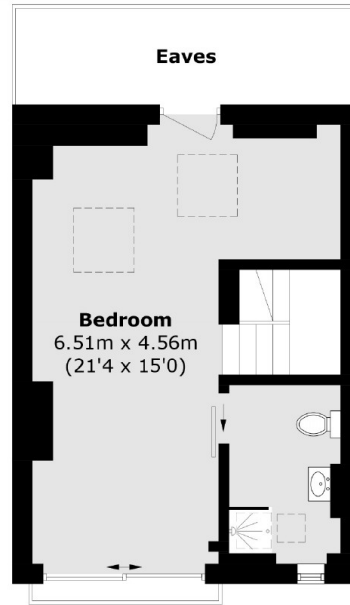
- Three Bedrooms
- Stylishly designed
- End of Terrace
- Landscaped Garden
- Bi-Fold Door
- Two Bathrooms



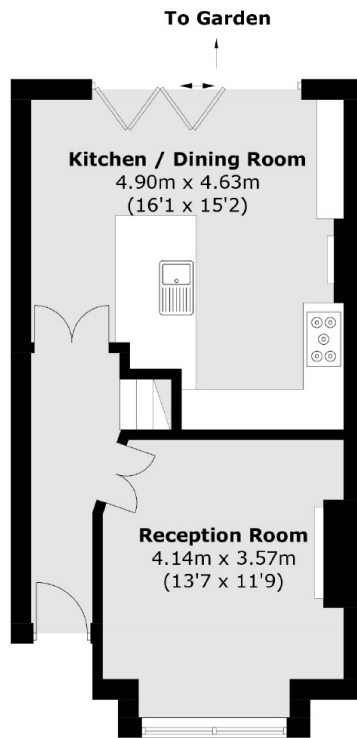




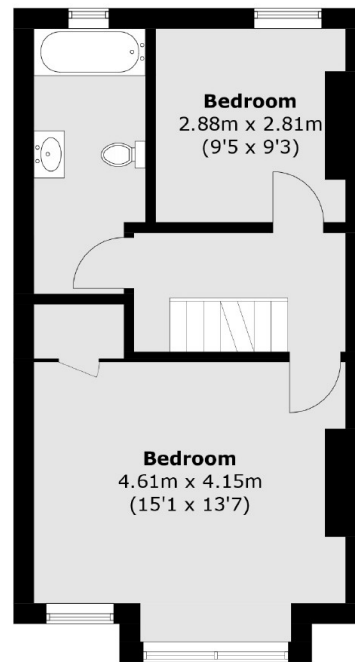
# Levenson Street, London, SW16



**Second Floor**



**Ground Floor**



**First Floor**

Total area (approx.): 111.6 sq. m (1,201.3 sq. ft)  
(Excluding Eaves)