



Romeyn Road, SW16

£315,000

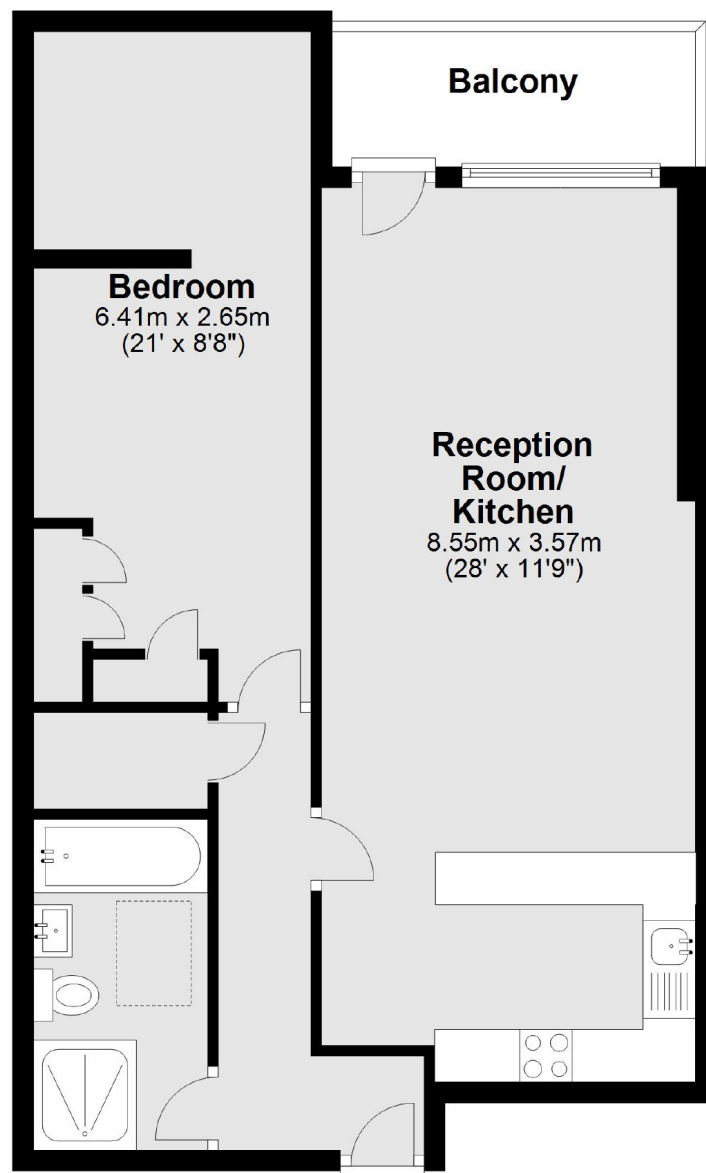
This large presented one double bedroom flat is a fantastic property for anyone looking to get onto the property ladder. This property has a large living room, the added bonus of a study and a private balcony.

Romeyn Road is located close to the shopping, eating and drinking choices of Streatham High Road and is about half a mile from Streatham Hill Station providing frequent rail links to London Victoria and numerous local bus routes to Brixton town centre.

Features

- One Double Bedroom
- Gated Development
- One Study
- Large Living Room
- Convenient Location
- Private Balcony

Romeyn Road, London, SW16



Main area: Approx. 60.4 sq. metres (650.3 sq. feet)
Plus balconies, approx. 5.0 sq. metres (53.5 sq. feet)

Dexters

Streatham
105 Streatham Hill
London
SW2 4UG
Sales
020 8674 7400

Energy Rating: C. We aim to make our particulars both accurate and reliable. However they are not guaranteed; nor do they form part of an offer or contract. If you require clarification on any points then please contact us, especially if you're traveling some distance to view. Please note that appliances and heating systems have not been tested and therefore no warranties can be given as to their good working order.

 **RICS** | Regulated
Estate Agent
and Letting Agent

[dexters.co.uk](https://www.dexters.co.uk)