



**Oakdale Road, SW16**

**£550,000**

**Dexters**





## Oakdale Road, SW16

With natural light flooding the space, this two double bedroom flat has a great feel throughout.

Occupying the front of the property and with high ceilings is the primary suite with built in wardrobes, dressing area, en-suite and balcony. To the rear is the sunny reception and the separate modern kitchen/diner. The second bedroom is also a good sized double room, and there is a further bathroom

The property also benefits from a share in the freehold, large communal garden and double glazed windows throughout.

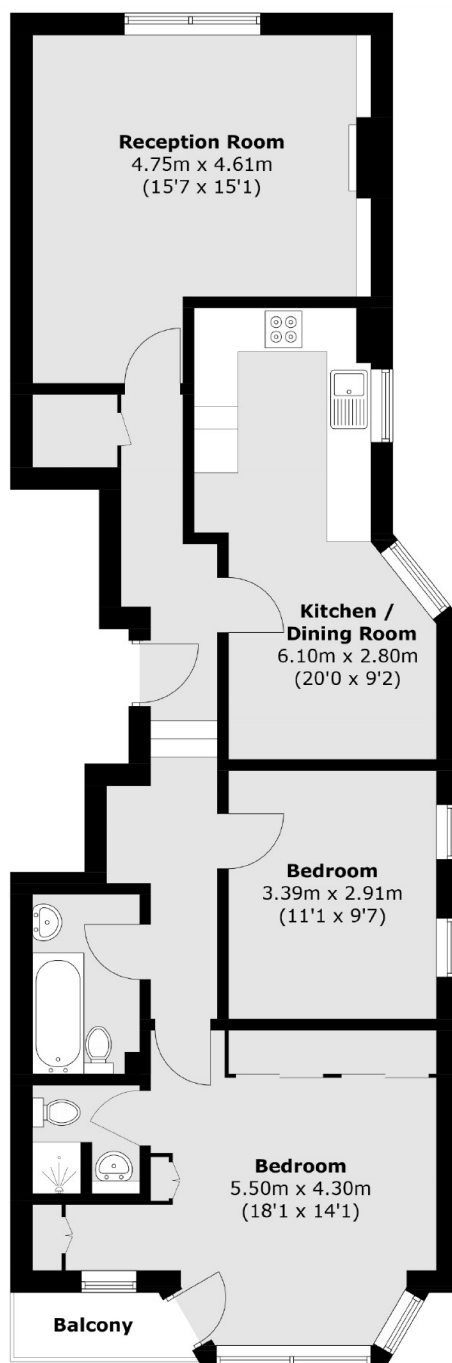
Oakdale Road is a quiet residential location very convenient for Streatham Common and the High Roads restaurants and shops. Excellent transport links nearby include Streatham Station with links to the city and numerous bus routes.

### Features

- Two Double Bedrooms
- Balcony
- Kitchen Diner
- Double Glazed Windows
- Communal South Facing Garden
- Two Bathrooms



# Oakdale Road, London, SW16



Total area (approx.): 81.3 sq. m (875.1 sq. ft)  
Balcony : 2.0 sq. m ( 21.5 sq. ft)

## Dexters

Streatham  
105 Streatham Hill  
London  
SW2 4UG  
Sales  
020 8674 7400

Energy Rating: C. We aim to make our particulars both accurate and reliable. However they are not guaranteed; nor do they form part of an offer or contract. If you require clarification on any points then please contact us, especially if you're traveling some distance to view. Please note that appliances and heating systems have not been tested and therefore no warranties can be given as to their good working order.

 **RICS** | Regulated  
Estate Agent  
and Letting Agent

[dexters.co.uk](https://www.dexters.co.uk)