



## Telford Avenue, SW2

### £295,000

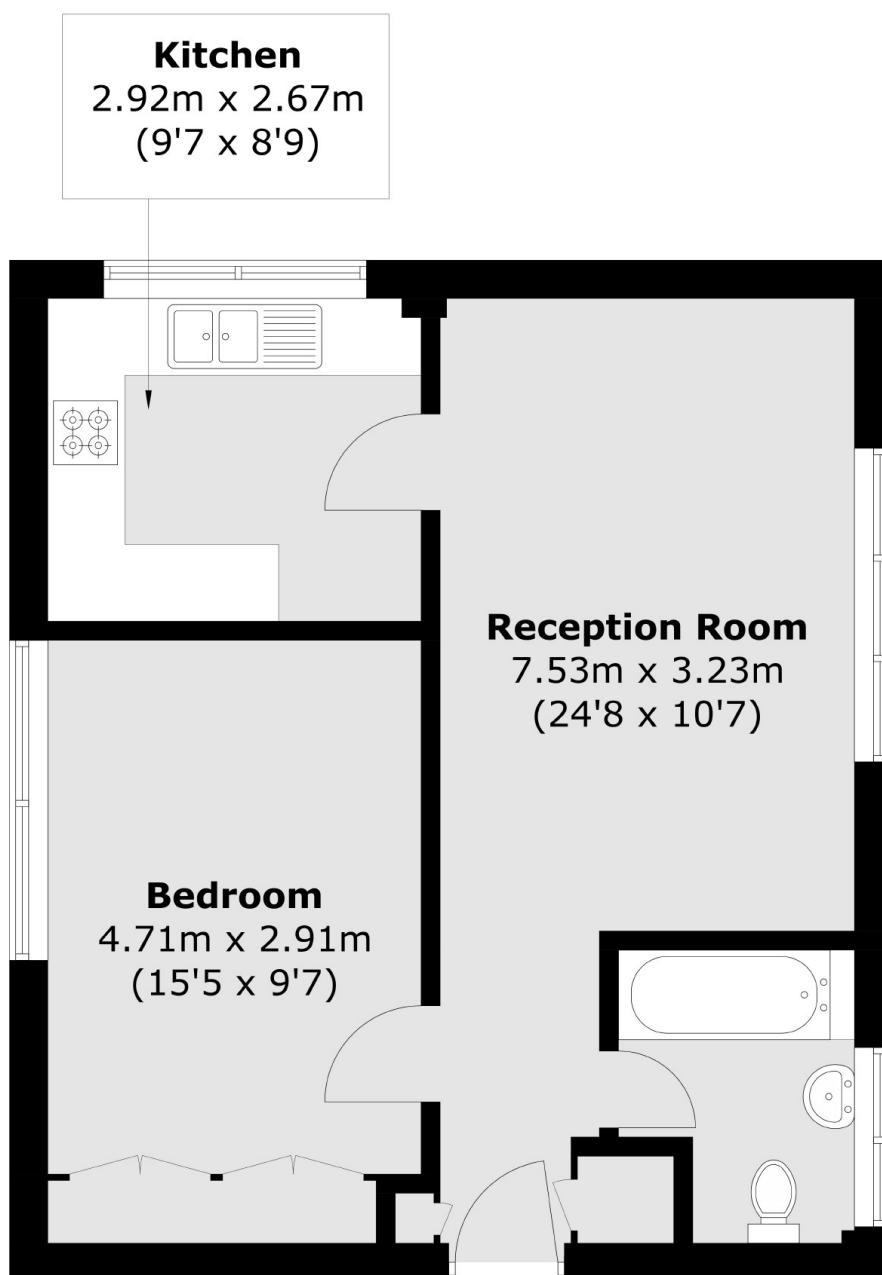
A perfect first purchase is this one double bedroom purpose built flat. Located on a charming street, this property has a large bedroom, separate kitchen and spacious reception as well as being ideally located just off Streatham High Road.

Telford Avenue is positioned in the highly desirable Telford Park conservation area, which is known for its grand period properties and great location bordering Balham and Streatham. Links into the city are available via Balham on the Northern Line and Streatham Hill into Victoria via Clapham Junction.

### Features

- One Double Bedroom
- Separate Kitchen
- Great Location
- Communal Grounds
- Long Lease
- Built-in Storage

# Telford Avenue, London, SW2



Total area (approx.): 46.5 sq. m (500.5 sq. ft)

## Dexters

Streatham  
105 Streatham Hill  
London  
SW2 4UG  
Sales  
020 8674 7400

Energy Rating: C. We aim to make our particulars both accurate and reliable. However they are not guaranteed; nor do they form part of an offer or contract. If you require clarification on any points then please contact us, especially if you're traveling some distance to view. Please note that appliances and heating systems have not been tested and therefore no warranties can be given as to their good working order.

 **RICS** | Regulated  
Estate Agent  
and Letting Agent

[dexters.co.uk](https://www.dexters.co.uk)