



Glenister Park Road, SW16

£575,000

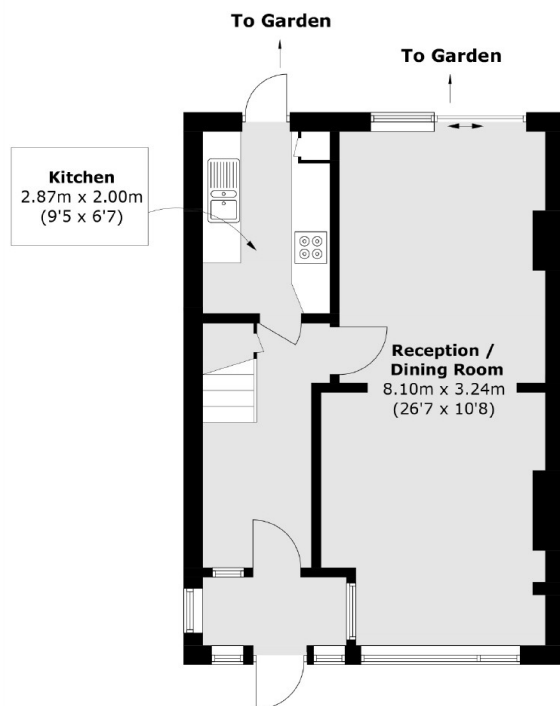
Located on one of Streatham Vales most sought after Roads this three bedroom home is in an excellent location for transport and schools. This home has been fully renovated with modern separate kitchen, double reception and stylish bathroom. Upstairs there are three bedrooms, with one that can be used as a nursery or study. This property has further potential to extend to the rear or in the loft if desired.

Glenister Park Road is ideally placed for two mainline stations with links to London Victoria, London Bridge as well as trains to East Croydon for Gatwick Airport. Streatham High Road is close by as are the open spaces of Streatham Common and the Rookery.

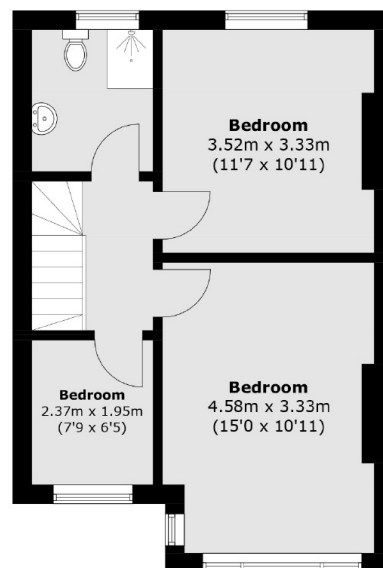
Features

- Three Bedrooms
- Double Reception
- Off-Street Parking
- Large Garden
- Modern Interior
- Separate Kitchen

Glenister Park Road, London, SW16



Ground Floor



First Floor

Total area (approx.): 86.2 sq. m (927.9 sq. ft)