



Wavertree Road, SW2

£575,000

Located on the top floor of this attractive building is this split-level, two double bedroom home. Rare to the area this home has a large roof terrace, share in the freehold and open-plan living/reception room.

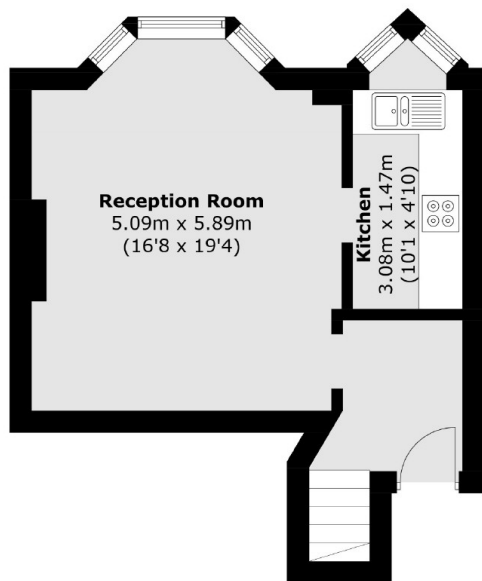
This property is ideal for a buyer looking for a top floor property with the benefit of private outside space. This home is bright throughout and offers two large double bedrooms and plenty of storage throughout. There is also a modern bathroom on the top floor.

Wavertree Road offers excellent connections to central London via train from Streatham Hill and Tulse Hill, by tube at Brixton or on the numerous bus routes. The independent shops, bars and restaurant of the vibrant high road are a short walk away.

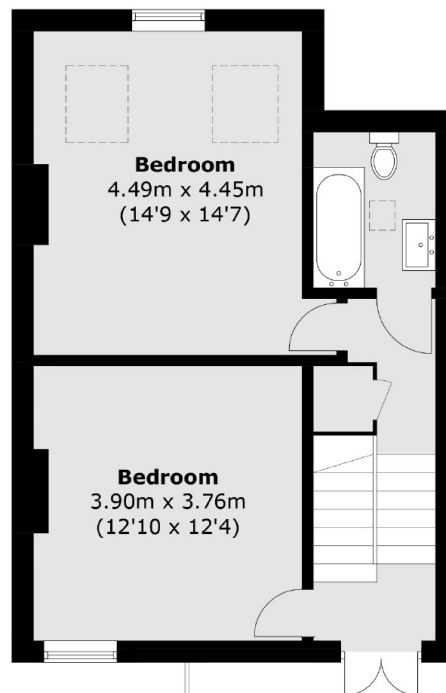
Features

- Two Double Bedrooms
- Split Level
- Roof Terrace
- Bright Flat
- Great Location
- Share of Freehold

Wavertree Road, London, SW2



First Floor



Second Floor

Total area (approx.): 73.8 sq. m (794.4 sq. ft)
Roof Terrace : 29.2 sq. m (314.3 sq. ft)