



## Glencairn Road, SW16

### £280,000

A split level, one double bedroom, period conversion flat with an open plan reception and no onward chain. This property is located on a desirable residential street close to Streatham Common.

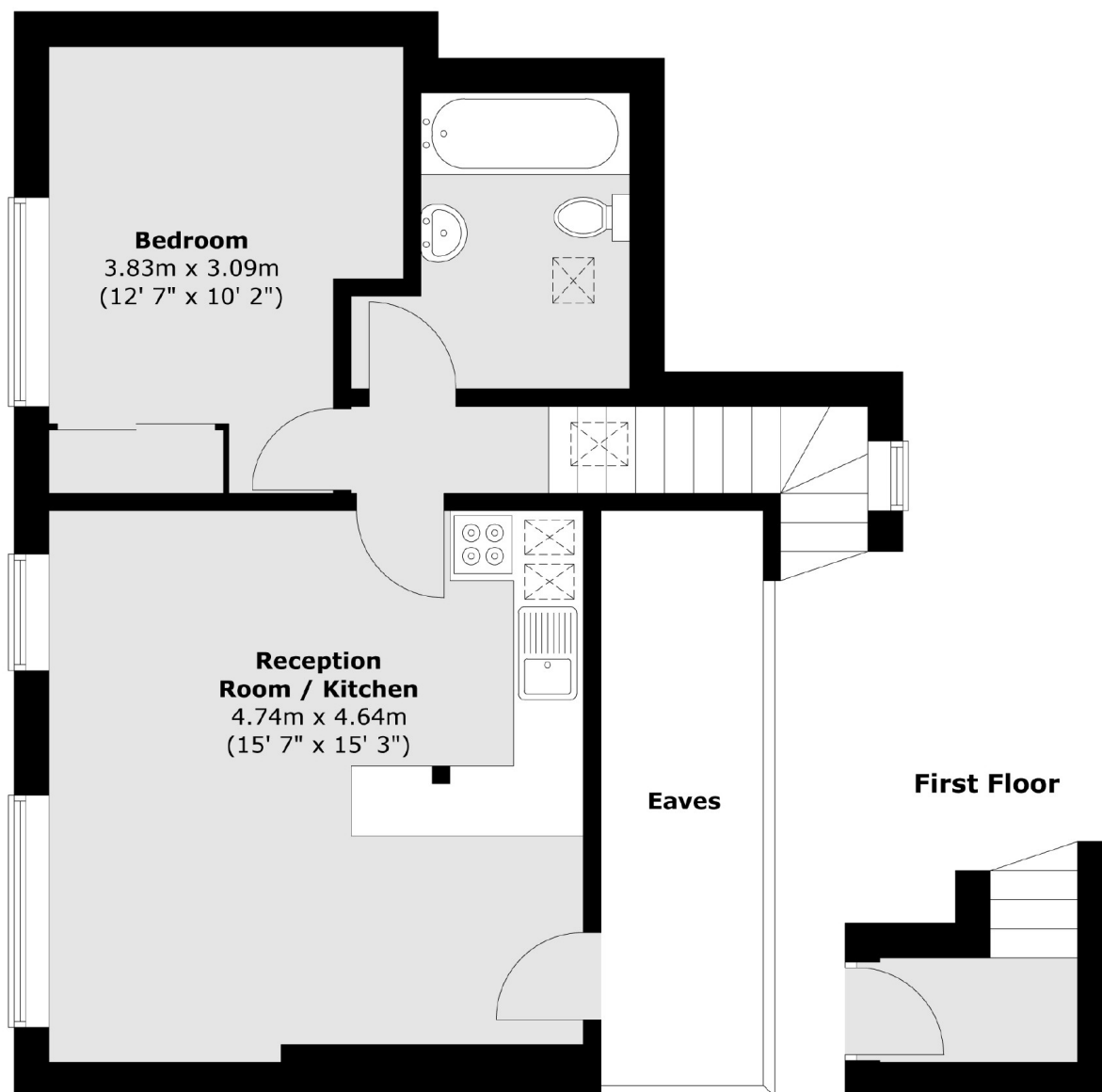
Glencairn Road is within close proximity to the open spaces of Streatham Common and also offers easy access to Streatham Common mainline station into London Victoria and various bus routes to the city.

### Features

- Top Floor Flat
- Double Bedroom
- Eaves Storage
- Open Plan Kitchen
- Modern Bathroom
- No Chain

# Glencairn Road, London, SW16

## Second Floor



Total area (approx.) : 45.4 sq. m (489 sq. ft)

# Dexters

Streatham  
105 Streatham Hill  
London  
SW2 4UG  
Sales  
020 8674 7400

Energy Rating: C. We aim to make our particulars both accurate and reliable. However they are not guaranteed; nor do they form part of an offer or contract. If you require clarification on any points then please contact us, especially if you're traveling some distance to view. Please note that appliances and heating systems have not been tested and therefore no warranties can be given as to their good working order.

 **RICS** | Regulated  
Estate Agent  
and Letting Agent

[dexters.co.uk](https://www.dexters.co.uk)