



Fernthorpe Road, SW16

£2,100 Per calendar month

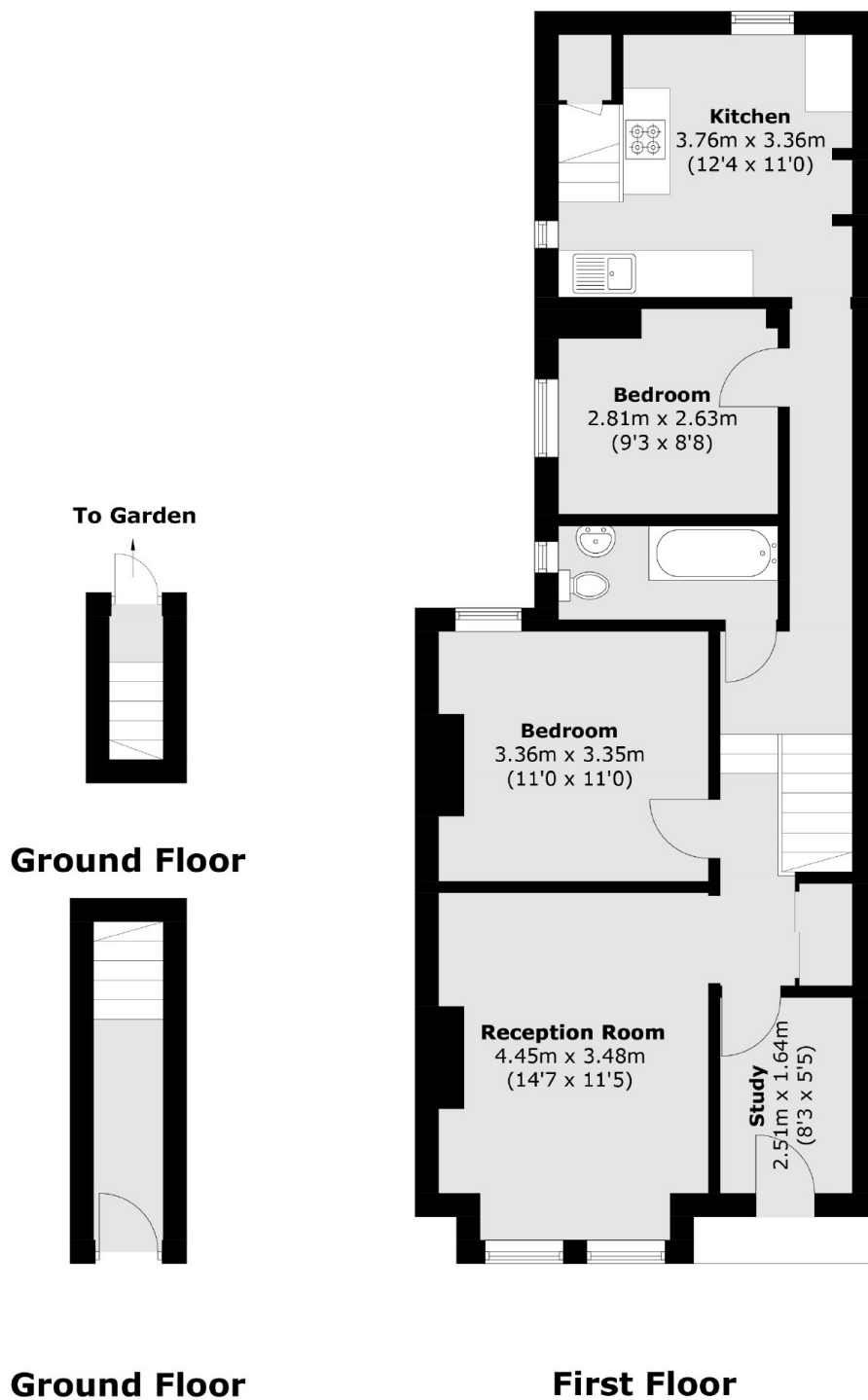
A well presented two bedroom maisonette offering two double bedrooms, eat in kitchen, separate study room and private garden. The property is perfect for two professional sharers.

The property is situated in Streatham near to both Streatham Common and Tooting Bec Common with easily accessible green open spaces, bars and restaurants nearby.

Features

- Two Double Bedrooms
- Study Room
- Private Garden
- Eat In Kitchen
- Separate Living Room
- Own Entrance

Fernthorpe Road,
London, SW16



Total area (approx.): 73.4 sq. m (790.1 sq. ft)

Dexters

Streatham
105 Streatham Hill
London
SW2 4UG
Lettings
020 8674 8400

Energy Rating: . We aim to make our particulars both accurate and reliable. However they are not guaranteed; nor do they form part of an offer or contract. If you require clarification on any points then please contact us, especially if you're traveling some distance to view. Please note that appliances and heating systems have not been tested and therefore no warranties can be given as to their good working order.

RICS | Regulated
Estate Agent
and Letting Agent

dexters.co.uk