



## Streatham High Road, SW16

£1,300 Per calendar month

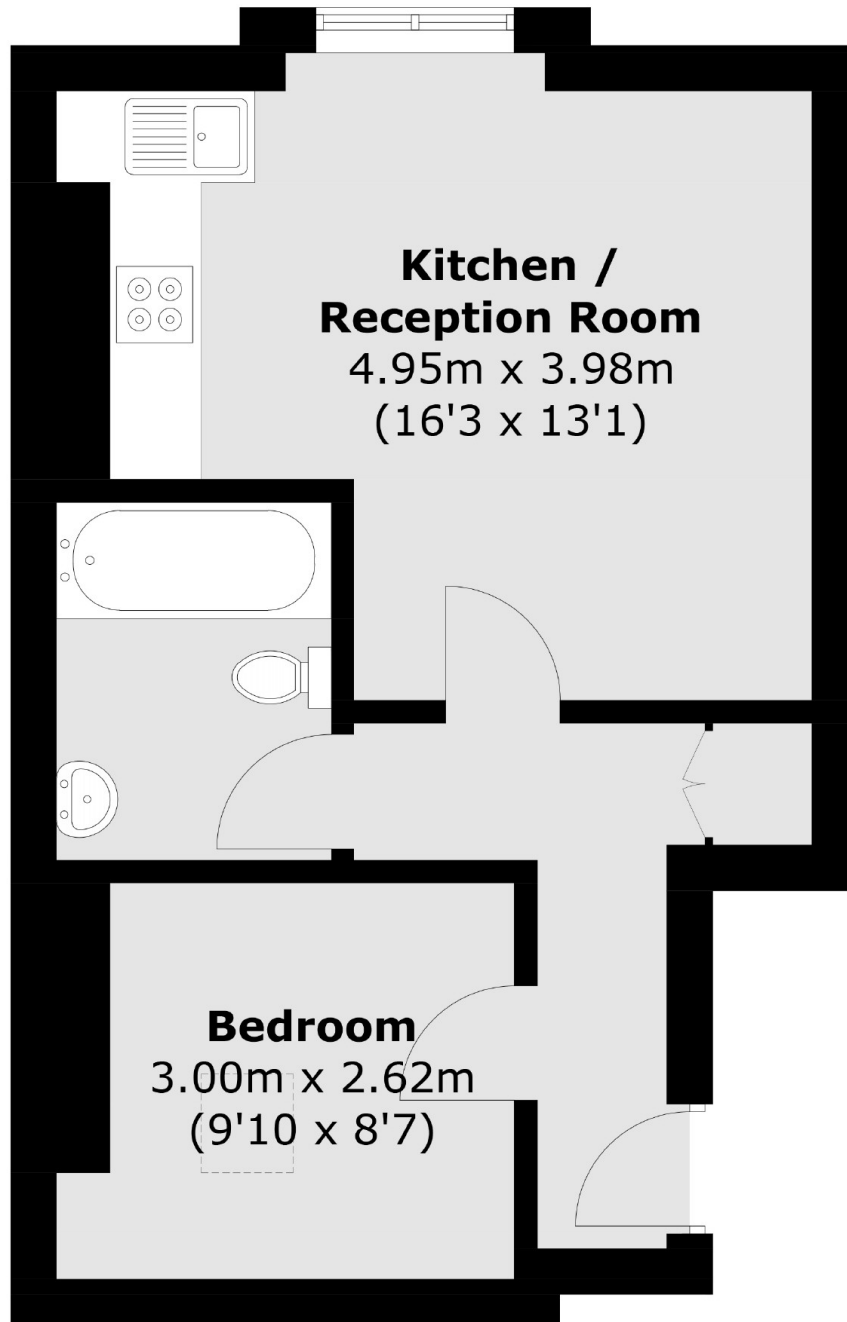
A great one bedroom flat that's ideal for the working professional or couple. Neutrally decorated throughout with an open plan living/ kitchen area.

Streatham High road is primely positioned with cafés, bars, shops and restaurants. This property is just moments away from Streatham Station.

### Features

- One Bedroom
- Open Plan Living/ Kitchen Area
- Prime Location
- Neutrally Decorated
- High Ceilings
- Double Glazing

Streatham High Road,  
London, SW16



Total area (approx.): 36.2 sq. m (389.6 sq. ft)

**Dexters**

Streatham  
105 Streatham Hill  
London  
SW2 4UG  
Lettings  
020 8674 8400

Energy Rating: D. We aim to make our particulars both accurate and reliable. However they are not guaranteed; nor do they form part of an offer or contract. If you require clarification on any points then please contact us, especially if you're traveling some distance to view. Please note that appliances and heating systems have not been tested and therefore no warranties can be given as to their good working order.

 **RICS** | Regulated  
Estate Agent  
and Letting Agent

[dexters.co.uk](http://dexters.co.uk)