



Streatham Road, SW16

£625,000

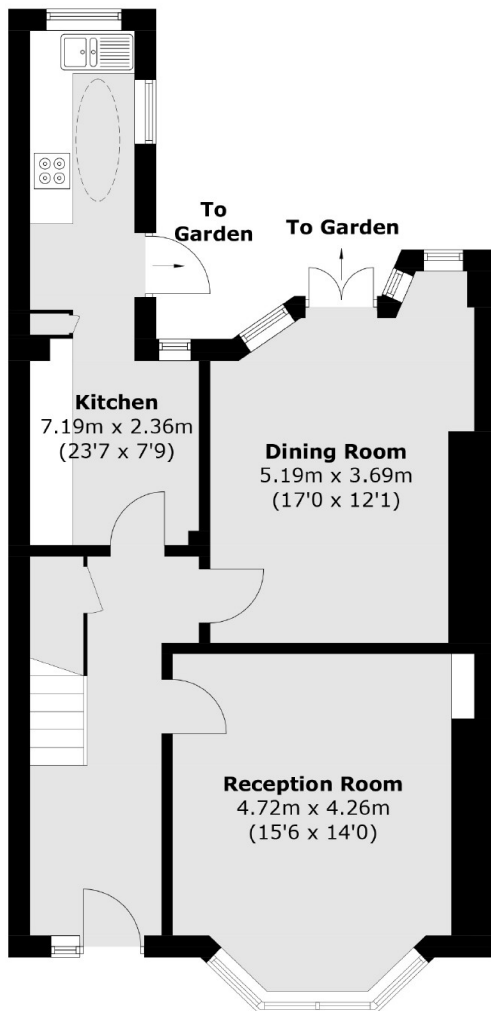
This three bedroom house is the perfect family home. With plenty of potential to extend to the rear and into the loft this home has the scope to become a large four bedroom property following suit of others on the street. This home has two reception rooms and a separate kitchen. The property benefits from a south/east facing garden.

Streatham Road is conveniently located on the borders of Streatham and Furzedown with Tooting Mainline station close by providing links to the city. There are local amenities nearby whilst the green space of Tooting Bec common is perfect for walks or use of the Lido.

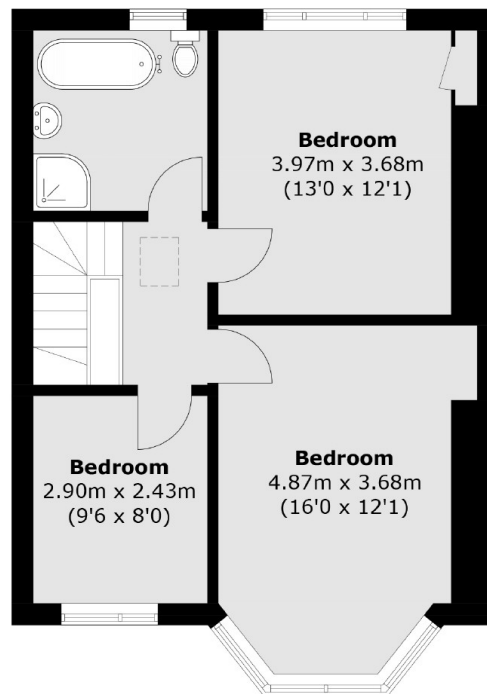
Features

- Three Bedrooms
- Double Reception Room
- No Onward Chain
- Over 1,210 Sq Ft

Streatham Road, London, SW16



Ground Floor



First Floor

Total area (approx.): 112.7 sq. m (1,213.1 sq. ft)
(Excluding Eaves)