



Hailsham Avenue, SW2

£535,000

Dexters



Hailsham Avenue, SW2

A three bedroom maisonette located in the heart of Streatham Hill. This impressive property has three bedrooms and two bathrooms, one being en-suite and arranged over two floors. It also benefits from a private South West facing garden. There is the added bonus of the property being sold with no onward chain.

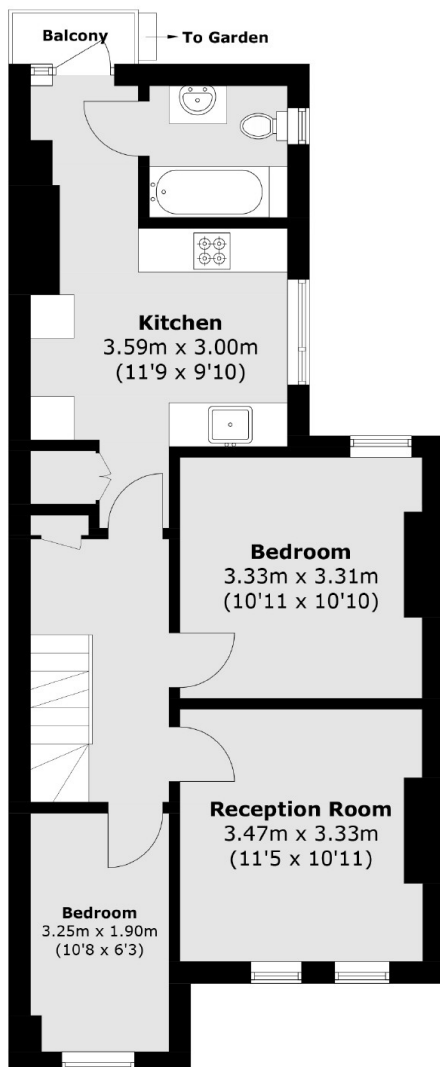
Hailsham Avenue is close proximity to Streatham Hill station with links to Victoria via Clapham Junction and frequent bus services to Brixton Town centre and surrounding areas. There are also a range of local amenities nearby, including a range of restaurants and shops.

Features

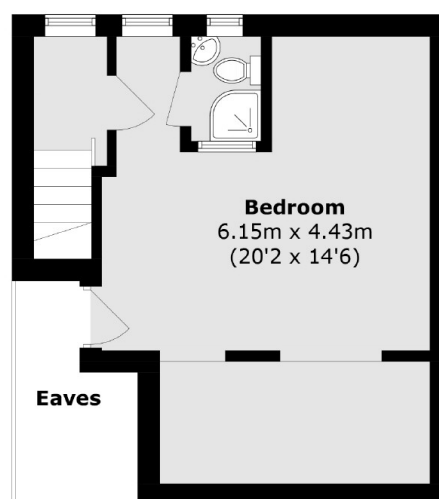
- Own Entrance
- Three Bedrooms
- Eat-In Kitchen
- Private Garden
- Sought After Location
- Chain Free



Hailsham Avenue, London, SW2



First Floor



Second Floor

Total area (approx.): 89.1 sq. m (959.0 sq. ft)
(Excluding Eaves)
Balcony : 1.2 sq. m (11.8 sq. ft)