



Blytheswood Place, SW16

£375,000

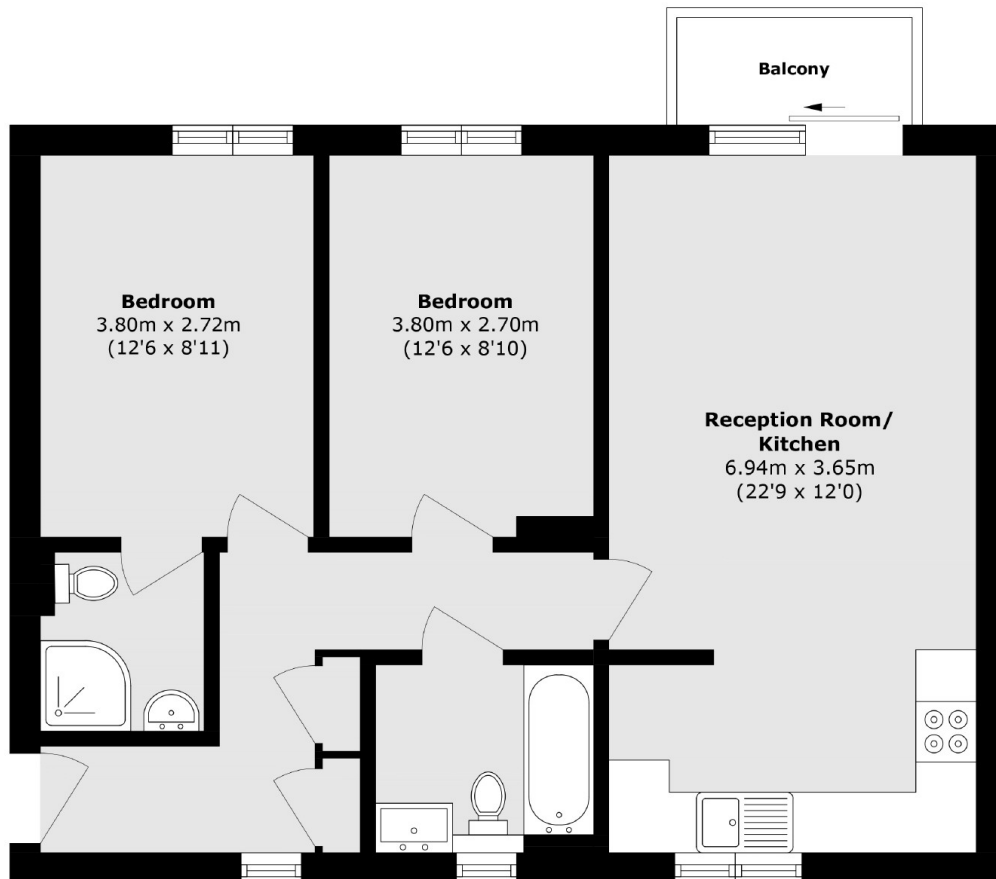
Located in a private gated development is this modern, two bedroom, two bathroom lateral flat. The open-plan kitchen/living room is bright and spacious with areas for dining, lounging and cooking which leads onto a private balcony.

Blytheswood Place is located just off Valley Road in a private gated development. The property is close to Streatham Hill and Tulse hill stations offering links to London Bridge and Victoria. Streatham Hill offers a range of shops, restaurants and bars.

Features

- Two Double Bedrooms
- Two Bathrooms
- Open-Plan Living
- Quiet Location
- Gated Development
- Balcony

Blytheswood Place, London, SW16



Total area (approx.): 64.5 sq. m (694.2 sq. ft)

Balcony area (approx.): 2.5 sq. m (26.9 sq. ft)