



**Strathbrook Road, SW16**

**£875,000**

**Dexters**



## Strathbrook Road, SW16

At just under 1,400sqft this three bedroom family home has been fully extended on the ground floor to create an incredible living space. The separate reception to the front is cosy featuring built in storage with shelves whilst the large, open kitchen diner is ideal for large family gatherings and entertaining. The crittall double doors lead onto the large grassed garden, which has space for the current owners trampoline and garden shed.

Upstairs there are two large double bedrooms with a third smaller which could be used as a study or nursery. There is also a modern family bathroom and separate downstairs w/c. This family home has been renovated to a high specification throughout and offers any purchaser the option to move straight in and have future potential to extend into the loft. This home also has the added benefit of off-street parking.

The property is located on the charming Strathbrook Road, a prime residential street in the heart of Streatham common. Mainline rail links are nearby with direct links into the City as are the open spaces of Streatham Common and the Rookery.

### Features

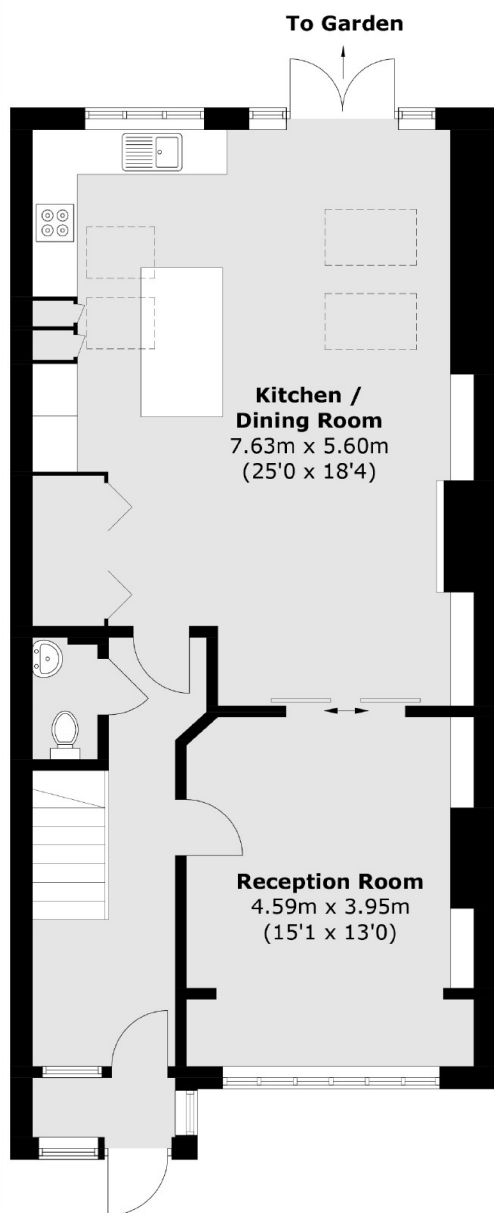
- Three Bedrooms
- Off-Street Parking
- Amazing Condition
- Separate Reception
- Downstairs W/C
- Large Garden



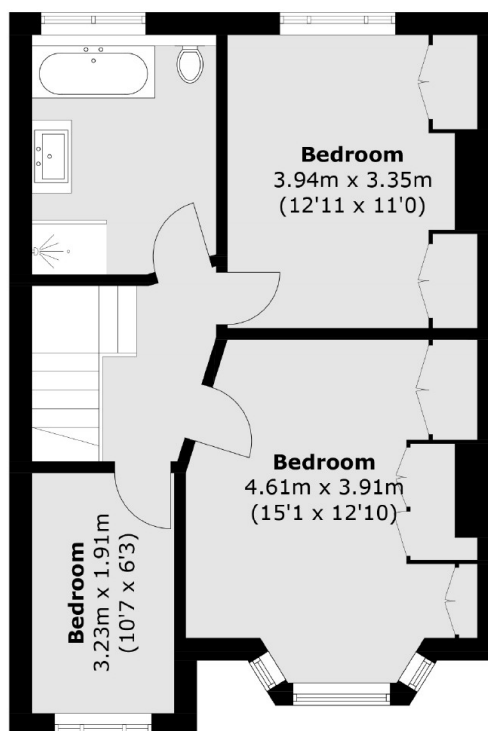




# Strathbrook Road, London, SW16



**Ground Floor**



**First Floor**

Total area (approx.): 126.8 sq. m (1364.9 sq. ft)