



## Norwood Road, SE24

### £435,000

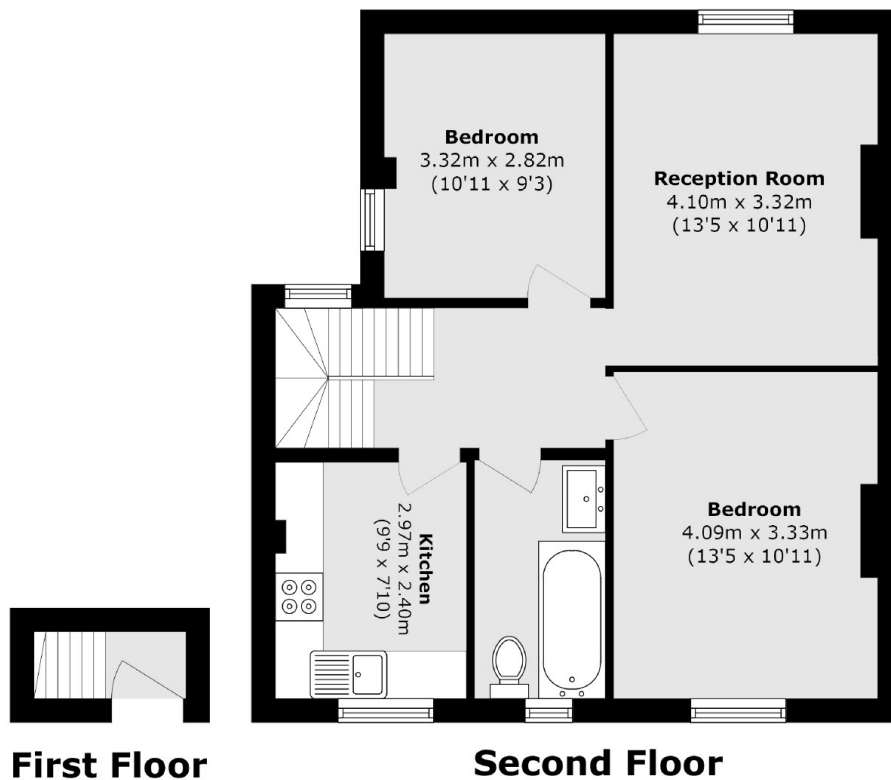
An impressive split level period conversion presented in excellent order throughout and comprises a bright, reception room, a well equipped kitchen, two double bedrooms and a modern bathroom. This property is also offered with no onward chain.

Norwood Road is ideally located for the many shops, restaurants and cafés of Herne Hill, the wide green open spaces of Brockwell Park along with Tulse Hill Station are just around the corner. Tulse Hill Station provides links into London Bridge and Blackfriars.

### Features

- Two Double Bedrooms
- Separate Kitchen
- Chain Free
- Top Floor Flat
- Internal Staircase
- Immaculate Condition

# Norwood Road, London, SE24



Total area (approx.): 60.1 sq. m (646.9 sq. ft)

## Dexters

Streatham  
105 Streatham Hill  
London  
SW2 4UG  
Sales  
020 8674 7400

Energy Rating: C. We aim to make our particulars both accurate and reliable. However they are not guaranteed; nor do they form part of an offer or contract. If you require clarification on any points then please contact us, especially if you're traveling some distance to view. Please note that appliances and heating systems have not been tested and therefore no warranties can be given as to their good working order.

 **RICS** | Regulated  
Estate Agent  
and Letting Agent

[dexters.co.uk](https://www.dexters.co.uk)