



Norwood Road, SE24

£450,000

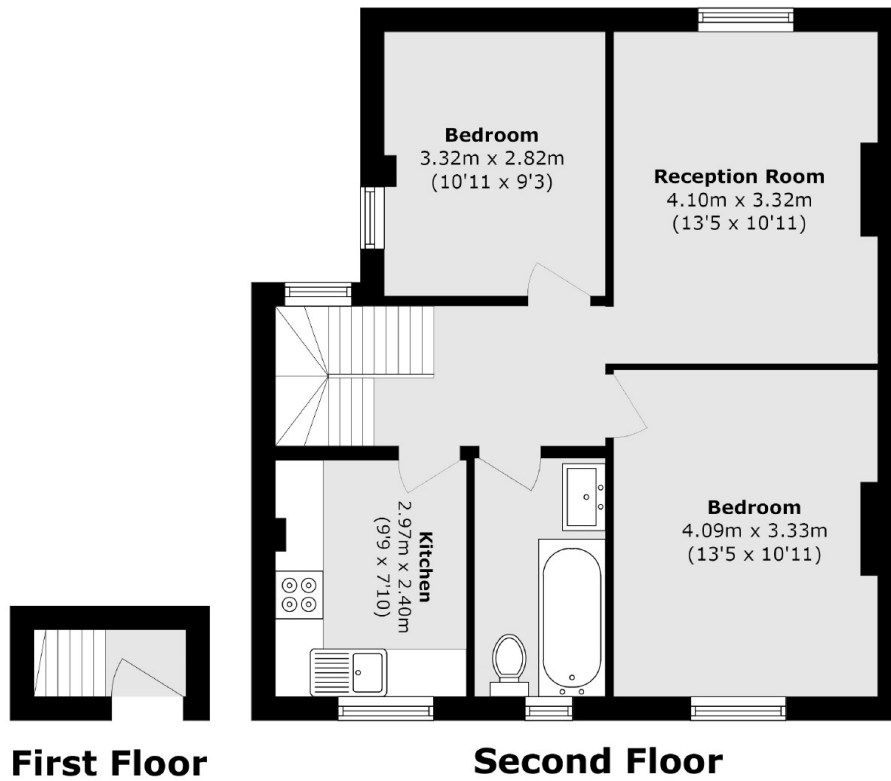
An impressive split level period conversion presented in excellent order throughout and comprises a bright, reception room, a well equipped kitchen, two double bedrooms and a modern bathroom. This property is also offered with no onward chain.

Norwood Road is ideally located for the many shops, restaurants and cafés of Herne Hill, the wide green open spaces of Brockwell Park along with Tulse Hill Station are just around the corner. Tulse Hill Station provides links into London Bridge and Blackfriars.

Features

- Two Double Bedrooms
- Separate Kitchen
- Chain Free
- Top Floor Flat
- Internal Staircase
- Immaculate Condition

Norwood Road, London, SE24



Total area (approx.): 60.1 sq. m (646.9 sq. ft)