



## Leigham Vale, SW16

£2,050 Per calendar month

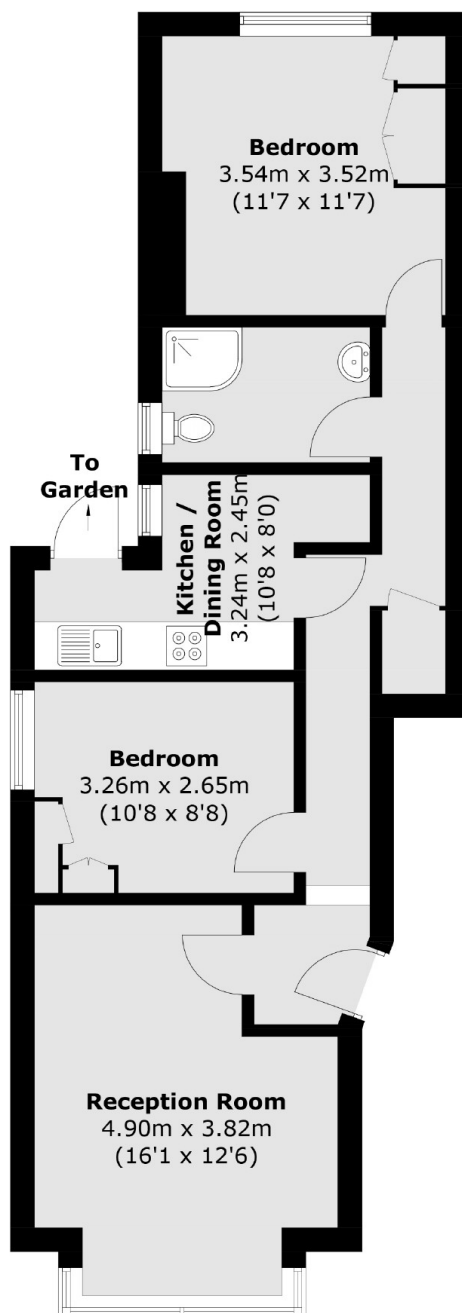
This two bedroom garden flat has been finished to a high standard throughout. Offering two great size double bedrooms, a separate living area and a private garden with decking area to the back. This property is perfect for the professional couple or two friends looking for great transport links.

Leigham Vale is a sought after road within the local area and is ideally situated for an excellent array of shops in both Streatham and West Norwood town centres as well as frequent bus routes to Brixton. Tulse Hill station is within easy reach for rail links serving London Bridge.

### Features

- Two Double Bedroom Flat
- Private Garden
- Separate Living Area
- Modern Kitchen & Bathroom
- Finished To A High Standard
- Prime Location

# Leigham Vale, London, SW16



Total area (approx.): 61.1 sq. m (657.7 sq. ft)