



Barcombe Avenue, SW2
£650,000

Dexters



Barcombe Avenue, SW2

At just under 1,300sqft this three double bedroom maisonette is spacious throughout. The large reception features a large window, flooding the room with natural light. There is a rear kitchen diner with stairs down to the private garden. Upstairs is a large bedroom with kitchenette, en-suite shower and roof terrace.

Two further double bedrooms are also found on the first floor with one containing two windows and a period fireplace. This home also has the added benefit of its own front door and internal staircase to both the first and top floor.

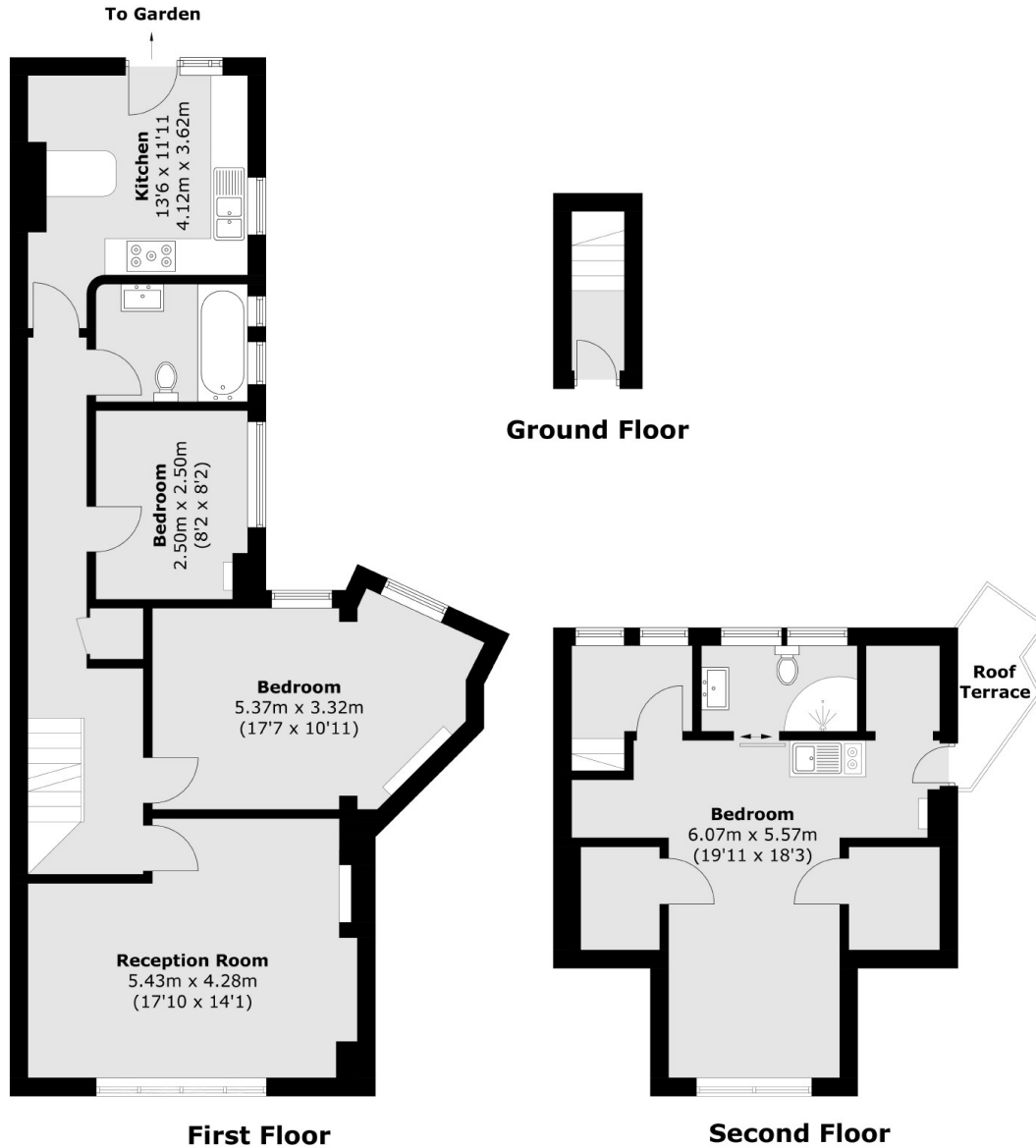
Barcombe Avenue runs just off Streatham Hill in the area known locally as the ABCD roads. Streatham High Road is full of amenities and Streatham Hill mainline station has frequent trains to Victoria, via Clapham Junction. Tulse Hill Station is also within walking distance and provides links to London Victoria and London Bridge.

Features

- Three Bedrooms
- Large Reception
- Private Garden
- Own Front Door
- Quiet Location
- End of Terrace



Barcombe Avenue, London, SW2



Total area (approx.): 117.9 sq. m (1,269.0 sq. ft)
Roof Terrace (approx.): 3.0 sq. m (32.3 sq. ft)

Dexters

Streatham
105 Streatham Hill
London
SW2 4UG
Sales
020 8674 7400

Energy Rating: D. We aim to make our particulars both accurate and reliable. However they are not guaranteed; nor do they form part of an offer or contract. If you require clarification on any points then please contact us, especially if you're traveling some distance to view. Please note that appliances and heating systems have not been tested and therefore no warranties can be given as to their good working order.

 **RICS** | Regulated
Estate Agent
and Letting Agent

[dexters.co.uk](https://www.dexters.co.uk)