



## Ellison Road, SW16

### £450,000

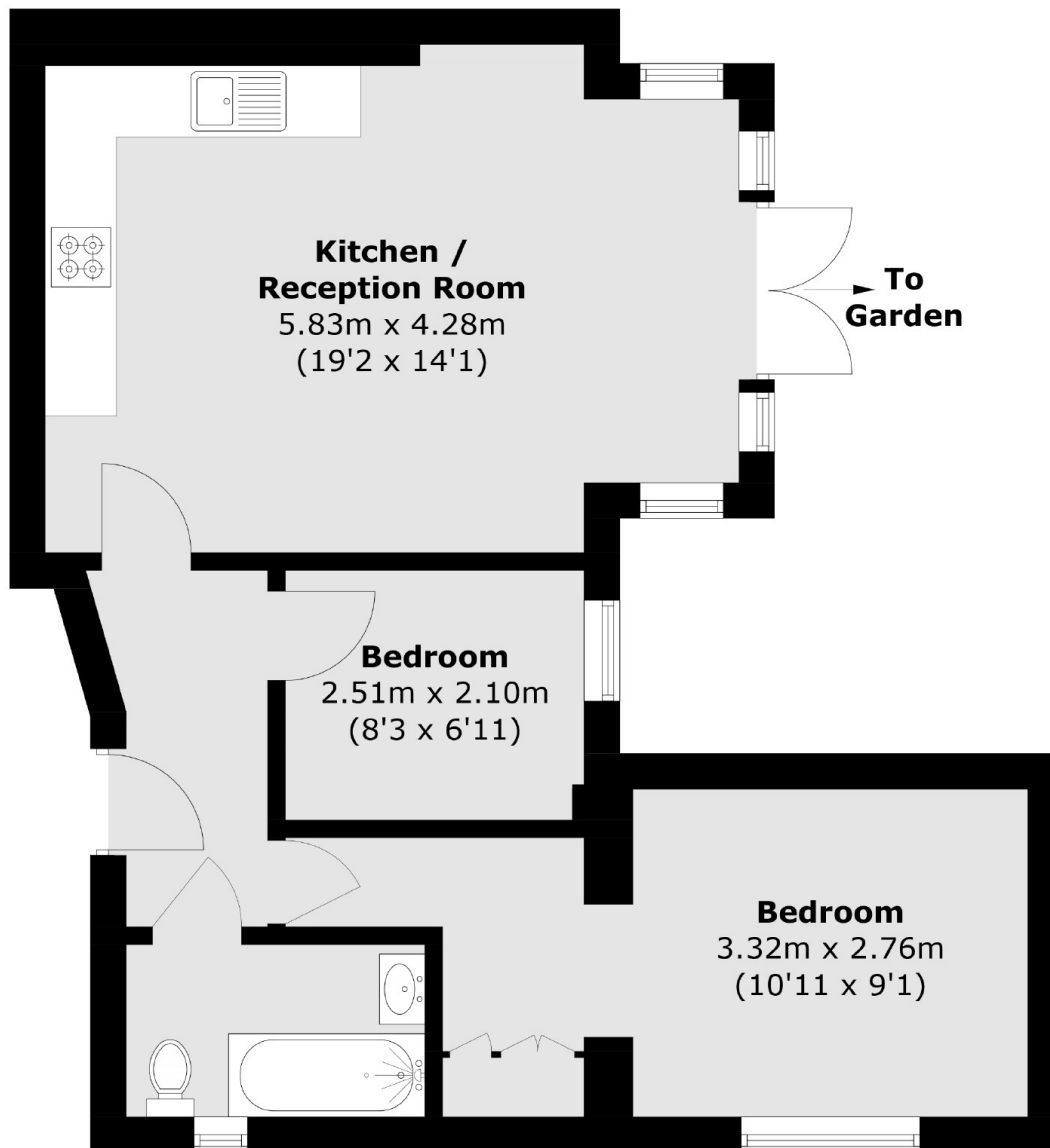
A two bedroom, period conversion located on Ellison Road. This lovely property has a large living space which is open plan with doors onto a large private garden as well as modern family bathroom. The current owners have landscaped the garden and re-done the windows and double doors onto the patio. It is a perfect first time purchase.

Ellison Road runs immediately off Greyhound Lane in the heart of Streatham Common, Greyhound lane has a local coffee shop, Deli, great pubs and Sainsburys local all within walking distance. This property is conveniently positioned only a short walk to Streatham Common station providing direct links into both The City and the West End. Streatham Common and the Rookery are nearby.

### Features

- Two Bedrooms
- Open-Plan Living
- Large Private Garden
- Period Conversion
- Immaculate Condition
- Share of Freehold

# Ellison Road, London, SW16



Total area (approx.): 52.4 sq. m (564.0 sq. ft)