



## Ellison Road, SW16

### £495,000

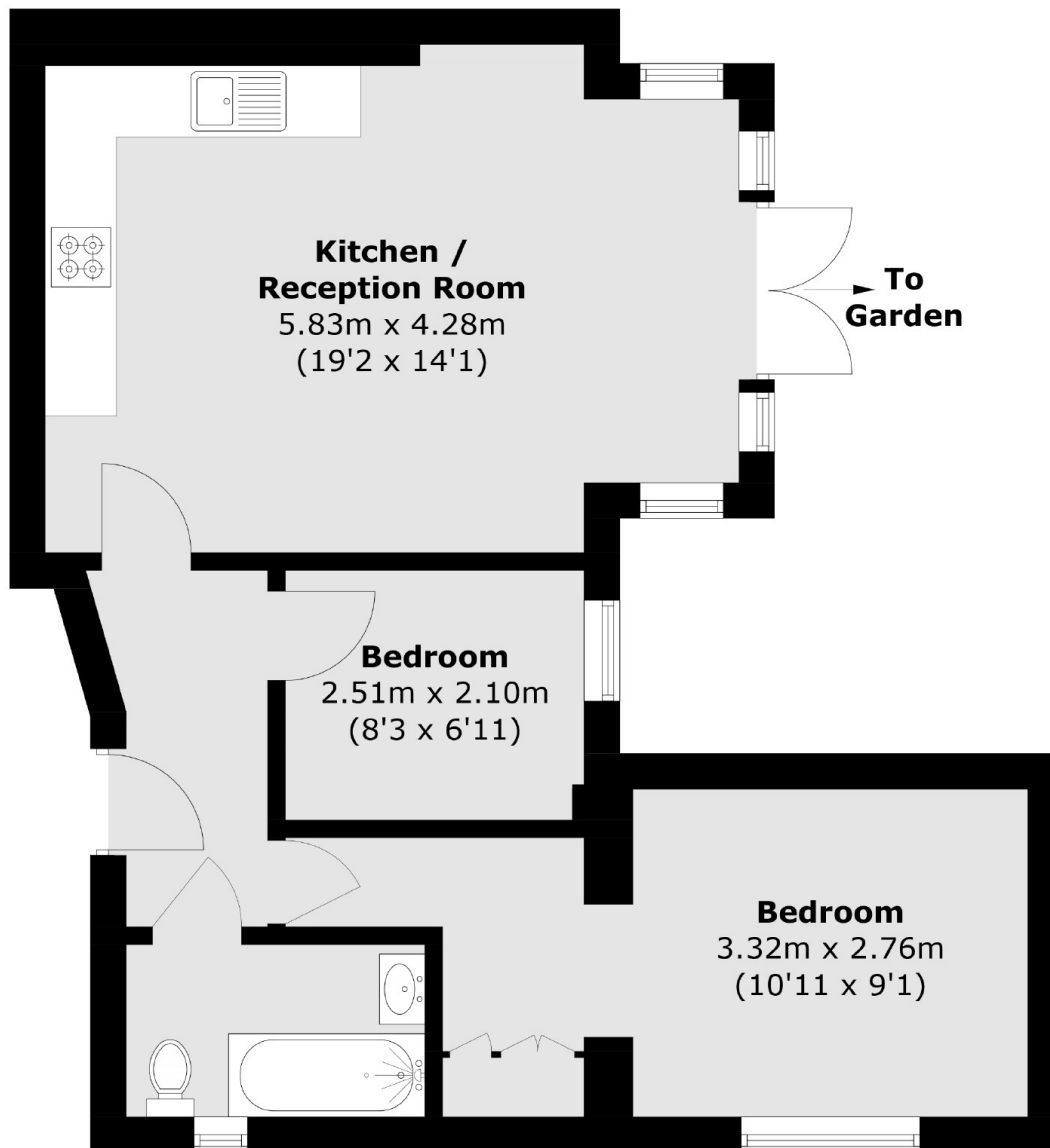
A two bedroom, period conversion located on Ellison Road. This lovely property has a large living space which is open plan with doors onto a large private garden as well as modern family bathroom. The current owners have landscaped the garden and re-done the windows and double doors onto the patio. It is a perfect first time purchase.

Ellison Road runs immediately off Greyhound Lane in the heart of Streatham Common, Greyhound lane has a local coffee shop, Deli, great pubs and Sainsburys local all within walking distance. This property is conveniently positioned only a short walk to Streatham Common station providing direct links into both The City and the West End. Streatham Common and the Rookery are nearby.

### Features

- Two Bedrooms
- Open-Plan Living
- Large Private Garden
- Period Conversion
- Immaculate Condition
- Share of Freehold

# Ellison Road, London, SW16



Total area (approx.): 52.4 sq. m (564.0 sq. ft)

## Dexters

Streatham  
105 Streatham Hill  
London  
SW2 4UG  
Sales  
020 8674 7400

Energy Rating: D. We aim to make our particulars both accurate and reliable. However they are not guaranteed; nor do they form part of an offer or contract. If you require clarification on any points then please contact us, especially if you're traveling some distance to view. Please note that appliances and heating systems have not been tested and therefore no warranties can be given as to their good working order.

 **RICS** | Regulated  
Estate Agent  
and Letting Agent

[dexters.co.uk](https://www.dexters.co.uk)