



Glencairn Road, SW16

£825,000

Dexters



Glencairn Road, SW16

A charming, four bedroom family home located on a popular residential street. On the ground floor is an open-plan kitchen diner with living room. The living room has built-in storage and shelves and double doors through the dining area lead onto the landscaped garden.

Upstairs are two large double bedrooms with a smaller bedroom currently being used as a study as well as a modern family bathroom. The top floor has been converted by the current owners creating a great primary bedroom with en-suite, built in cupboards and eaves storage.

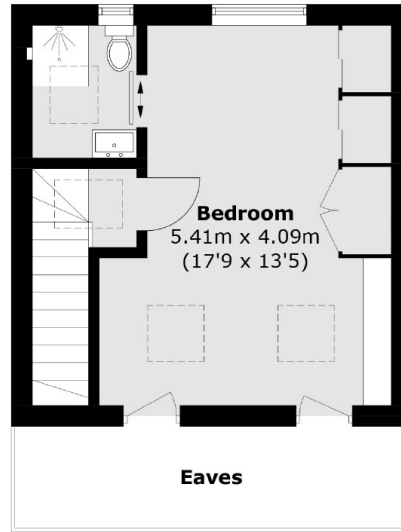
Glencairn Road is situated just off Streatham High Road with its shops, bar and restaurants only moments away. Your closest stations are Norbury and Streatham Common which offer frequent mainlines services to London Victoria and London Bridge.

Features

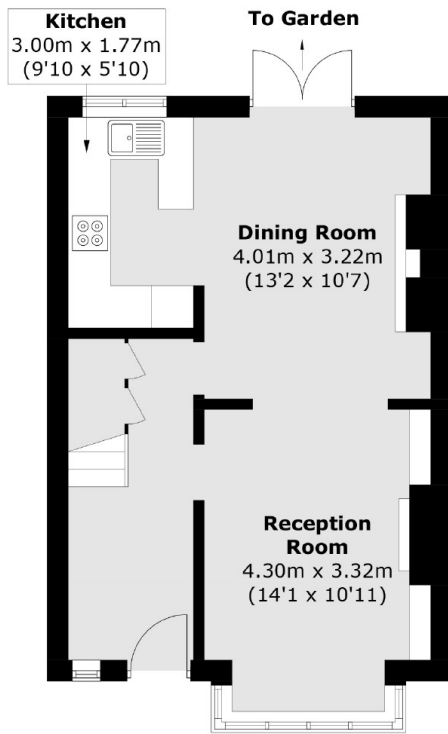
- Four Bedrooms
- Private Garden
- Great Condition
- Open-Plan
- Two Bathrooms
- Terraced House



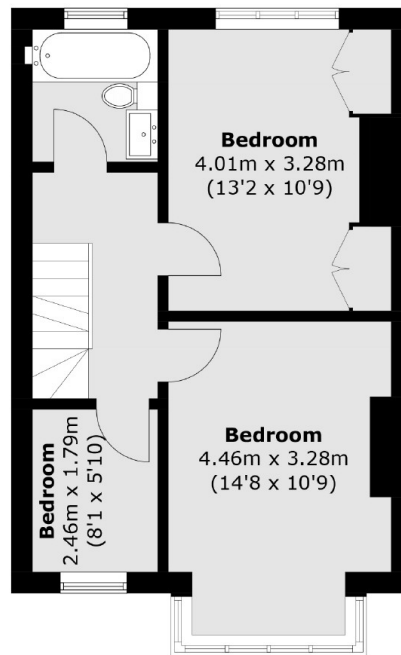
Glencairn Road, London, SW16



Second Floor



Ground Floor



First Floor

Total area (approx.): 110.9 sq. m (1,194.2 sq. ft)
(Excluding Eaves)