



Ockley Road, SW16

£550,000

Dexters



Ockley Road, SW16

OFFERS IN EXCESS OF: Spread over two floors is this two double bedroom property. Providing the feeling of a house, this property has its own front door, two double bedrooms with stairs up to the primary bedroom with fitted wardrobes.

This home has a modern bathroom as well as a large, bright, open plan living space with doors onto the landscaped, south facing, private and sunny garden.

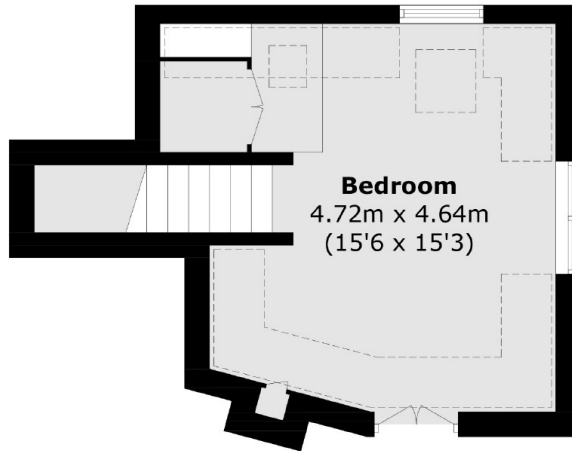
Ockley Road is a quiet residential street in the centre of Streatham with the high street, two mainline stations and local bars, shops and restaurants all around the corner. The open space of Tooting Common is just a few minutes walk away.

Features

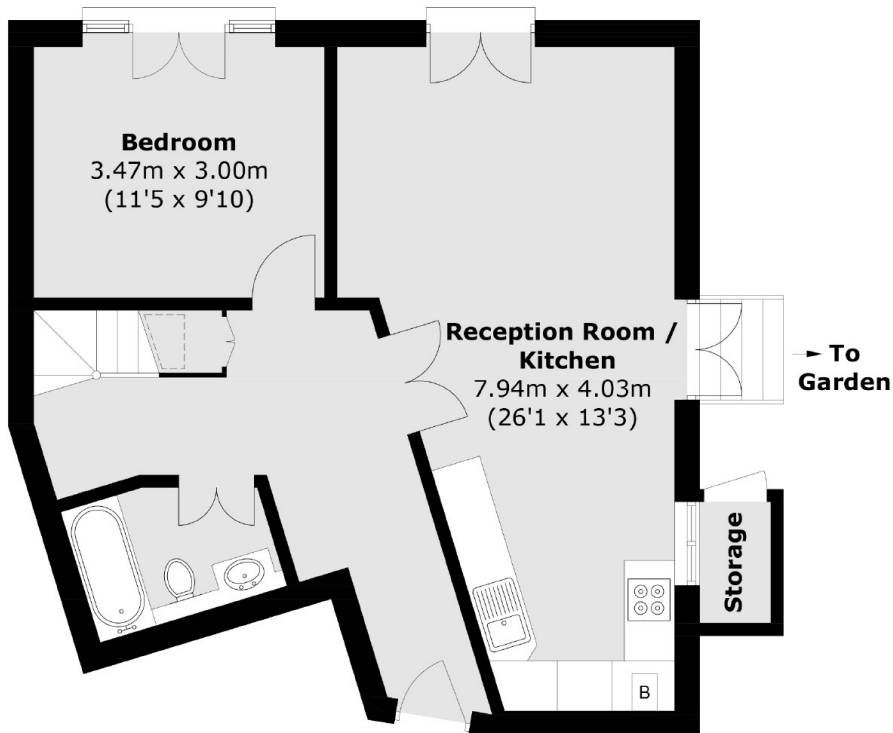
- Own Front Door
- Chain Free
- South Facing Garden
- Over Two Floors
- Great Location
- Modern Throughout



Ockley Road, London, SW16



First Floor



Ground Floor

Approx Internal Area: 77.3 sq. m (832.0 sq. ft)
Storage: 1.2 sq. m (12.9 sq. ft)