



Amesbury Avenue, SW2

£375,000

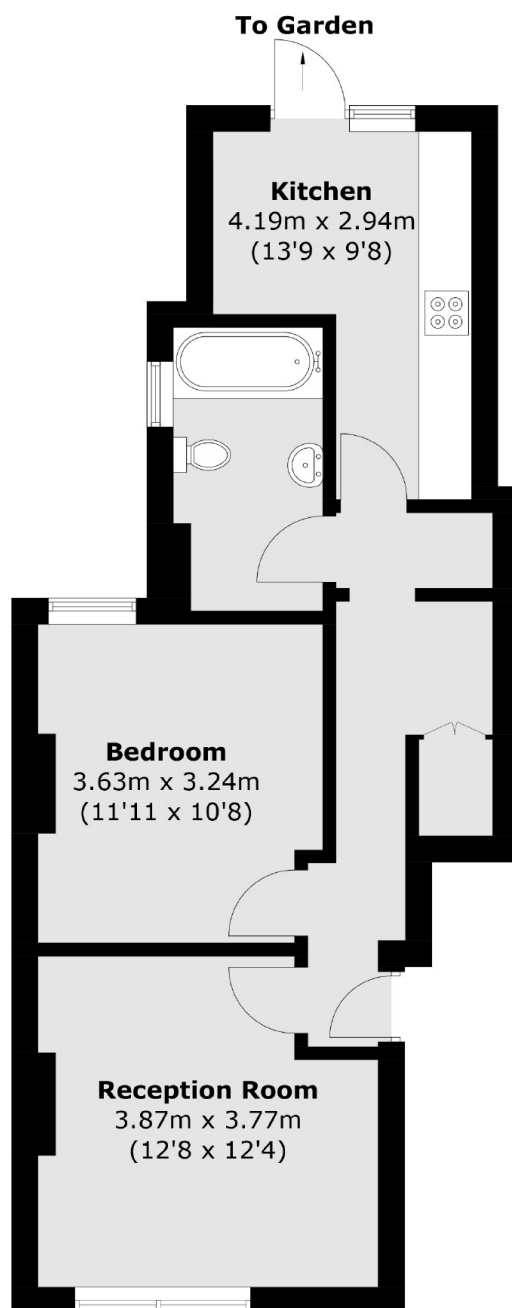
This one double bedroom ground floor flat has a bright living room with a large kitchen/dining area and modern kitchen. It benefits from a large bedroom, separate kitchen and a private garden. It is also being offered chain free.

Amesbury Avenue is conveniently located within easy reach of Streatham Hill mainline offering rail links to London Victoria (via Clapham Junction) and London Bridge. Streatham High road also offers a range of shops and restaurants.

Features

- Private Garden
- ABCD Roads
- Reception/Diner
- Chain Free
- Double Bedroom
- Convenient Location

Amesbury Avenue, London, SW2



Total area (approx.): 51.3 sq. m (552.2 sq. ft)