



## Streatham Road, CR4

### £400,000

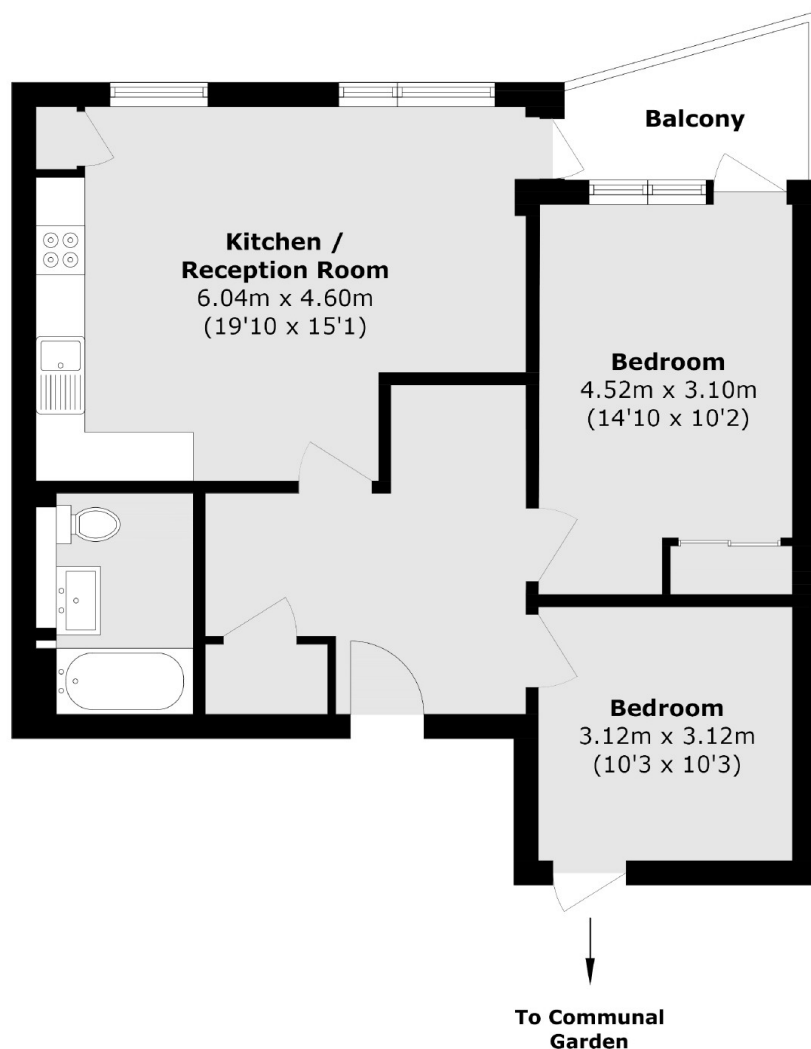
At just under 767sqft this modern two double bedroom flat is in great condition throughout. This home has a spacious open-plan kitchen/living room, two large bedrooms and two private outdoor spaces, one balcony that can be accessed via the main bedroom and the living room and also a patio. The property also benefits from a communal garden as well as allocated parking space.

Imperial Court is located within a mile of both Streatham Common and Tooting stations, with bus routes on your doorstep. The development offers great options whether you work locally or in town.

### Features

- Two Double Bedrooms
- Large Kitchen/Reception Room
- Communal Garden
- Great Condition Throughout
- Allocated Parking Space
- Balcony

# Streatham Road, Mitcham, CR4



Total area (approx.): 71.2 sq. m (766.3 sq. ft)

Balcony area (approx.): 5.2 sq. m (55.9 sq. ft)