



Hopton Road, SW16

£325,000

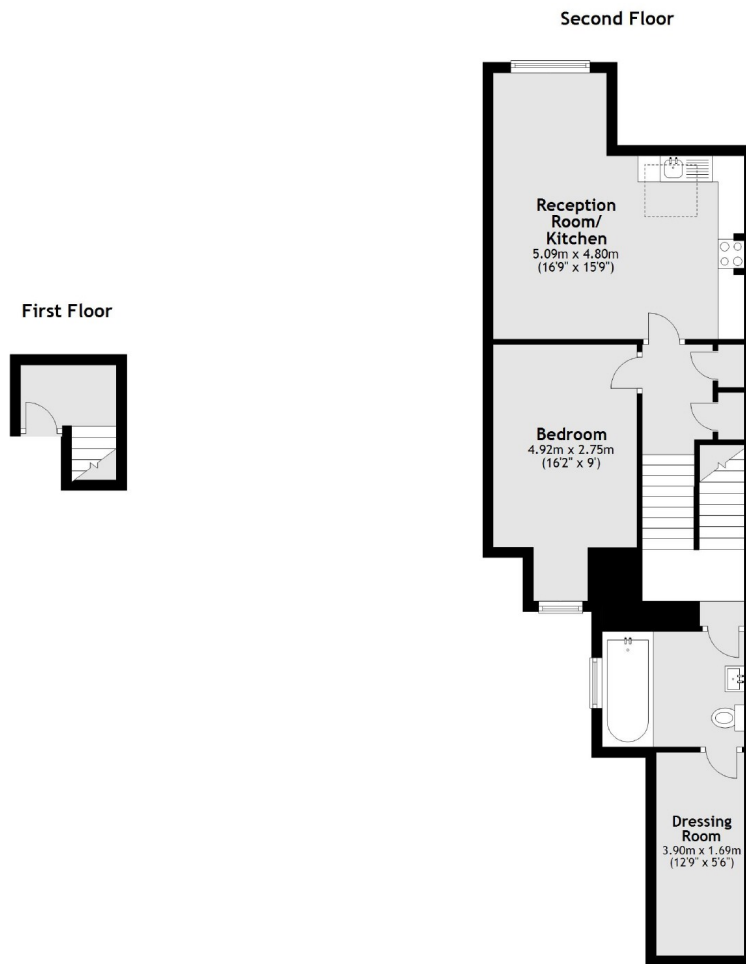
In immaculate condition this well proportioned and exceptionally bright one double bedroom Victorian conversion is an ideal first time purchase. With large kitchen/living area, dressing area and a share of freehold this property has ample space to enjoy.

Hopton Road is a desirable residential street located within a short walk to Streatham High Road and Streatham mainline station with overground links in to London Bridge and Blackfriars.

Features

- Top Floor Flat
- Well Presented
- Double Bedroom
- Excellent Storage
- Communal Garden
- Share Of Freehold

Hopton Road, London, SW16



Total area: approx. 60.9 sq. metres (655.5 sq. feet)

Dexters

Streatham
105 Streatham Hill
London
SW2 4UG
Sales
020 8674 7400

Energy Rating: G. We aim to make our particulars both accurate and reliable. However they are not guaranteed; nor do they form part of an offer or contract. If you require clarification on any points then please contact us, especially if you're traveling some distance to view. Please note that appliances and heating systems have not been tested and therefore no warranties can be given as to their good working order.

 **RICS** | Regulated
Estate Agent
and Letting Agent

[dexters.co.uk](https://www.dexters.co.uk)