



Gracefield Gardens, SW16

£225,000

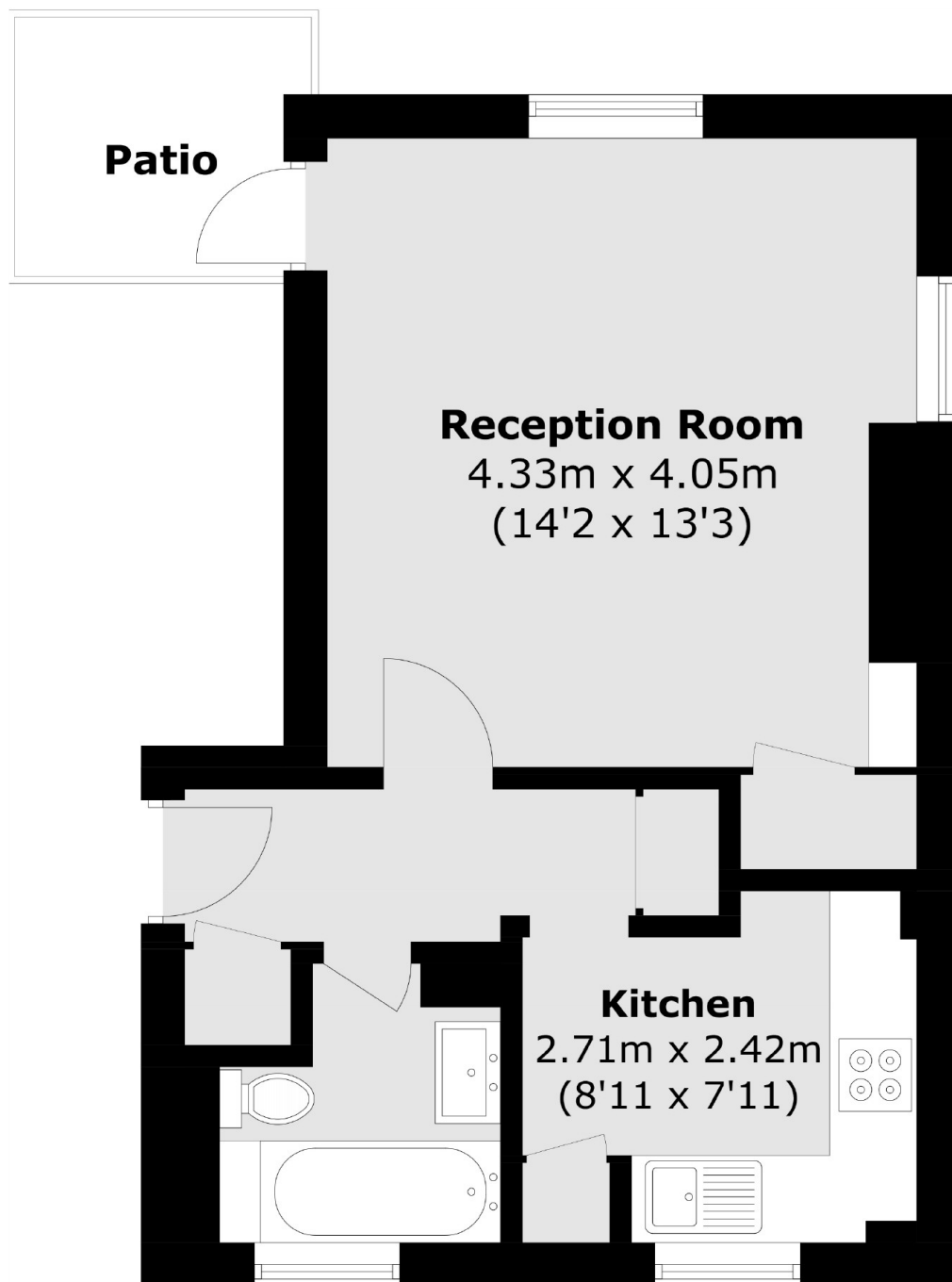
Offered with no onward chain is this large studio flat. This home has a modern separate kitchen and bathroom as well as a bright and spacious reception room with direct access onto the private balcony which look onto the communal grounds that surround the property.

Raynald House is located just off Gracefield Gardens in a secluded development. Gracefield Gardens is a charming residential road, ideally located within a short walking distance of Streatham High Road between Streatham Hill and Streatham Common, presenting a vast selection of shops, restaurants and bars alongside superb transport links into the city.

Features

- Studio Flat
- Chain Free
- Quiet Location
- Balcony
- Communal Gardens
- Separate Kitchen

Gracefield Gardens, London, SW16



Total area (approx.): 34.1 sq. m (367 sq. ft)

Dexters

Streatham
105 Streatham Hill
London
SW2 4UG
Sales
020 8674 7400

Energy Rating: D. We aim to make our particulars both accurate and reliable. However they are not guaranteed; nor do they form part of an offer or contract. If you require clarification on any points then please contact us, especially if you're traveling some distance to view. Please note that appliances and heating systems have not been tested and therefore no warranties can be given as to their good working order.

 **RICS** | Regulated
Estate Agent
and Letting Agent

[dexters.co.uk](https://www.dexters.co.uk)