



Gleneldon Road, SW16

£425,000

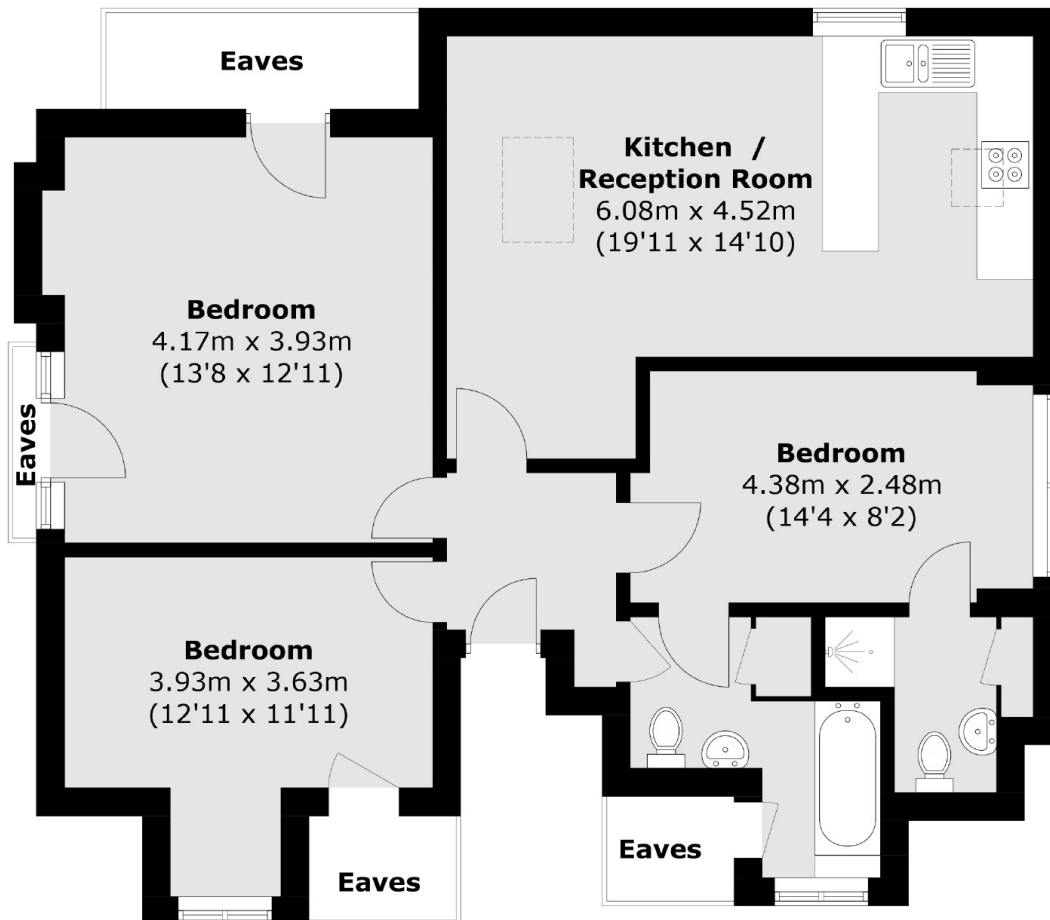
This large three double bedroom period conversion is the perfect buy, offering a large kitchen/diner, plenty of storage throughout, en-suite bathroom and it's also coming to the market with no onward chain.

Gleneldon Road is a lovely residential road leading conveniently to Streatham High Road providing access to local shops and shopping facilities. Streatham Station offers links into London Bridge and Blackfriars.

Features

- Over 840 Sq Ft
- No Onward Chain
- Convenient Location
- Three Double Bedrooms
- Large Kitchen/Diner
- Plenty Of Storage

Gleneldon Road, London, SW16



Total area (approx.): 78.2 sq. m (841.7 sq. ft)
(Excluding Eaves)

Dexters

Streatham
105 Streatham Hill
London
SW2 4UG
Sales
020 8674 7400

Energy Rating: D. We aim to make our particulars both accurate and reliable. However they are not guaranteed; nor do they form part of an offer or contract. If you require clarification on any points then please contact us, especially if you're traveling some distance to view. Please note that appliances and heating systems have not been tested and therefore no warranties can be given as to their good working order.

 **RICS** | Regulated
Estate Agent
and Letting Agent

[dexters.co.uk](https://www.dexters.co.uk)