



Montrell Road, SW2

£615,000

Dexters



Montrell Road, SW2

At over 800sqft is this two bedroom, period conversion located on a quiet residential street. This period conversion has a large living/dining room with bi-fold doors onto the private, secluded terrace as well as a feature fireplace.

Both bedrooms are reasonably sized with the main bedroom hosting the feature fireplace and large bay window which floods the room with light. There is a stylish bathroom as well as a shared communal garden to the rear and a share in the freehold.

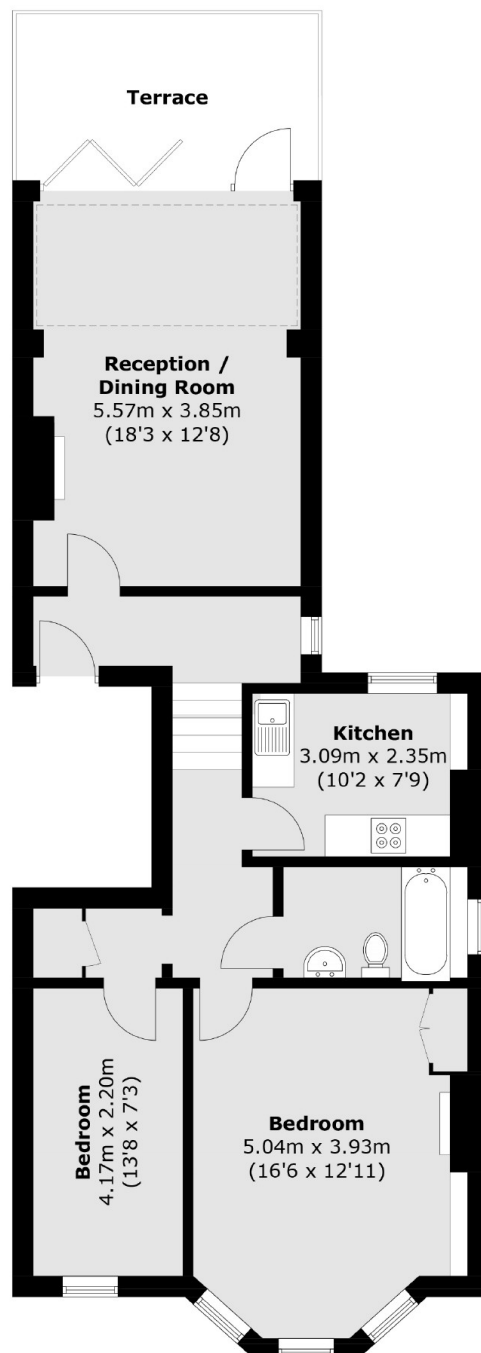
Montrell Road is a quiet residential street and is covered by many bus routes towards Clapham South and Brixton and is moments away from Streatham High Road offering many local amenities as well as Train routes into Clapham Junction and Victoria from Streatham Hill Station.

Features

- Two Double Bedrooms
- Private Terrace
- Separate Kitchen
- Two Bedrooms
- Great Location
- Bright Flat



Montrell Road, London, SW2



Total area (approx.): 75.5 sq. m (812.7 sq. ft)
Terrace: 10.4 sq. m (111.9 sq. ft)

Dexters

Streatham
105 Streatham Hill
London
SW2 4UG
Sales
020 8674 7400

Energy Rating: D. We aim to make our particulars both accurate and reliable. However they are not guaranteed; nor do they form part of an offer or contract. If you require clarification on any points then please contact us, especially if you're traveling some distance to view. Please note that appliances and heating systems have not been tested and therefore no warranties can be given as to their good working order.

 **RICS** | Regulated
Estate Agent
and Letting Agent

[dexters.co.uk](https://www.dexters.co.uk)