



## Leigham Court Road, SW16

### £500,000

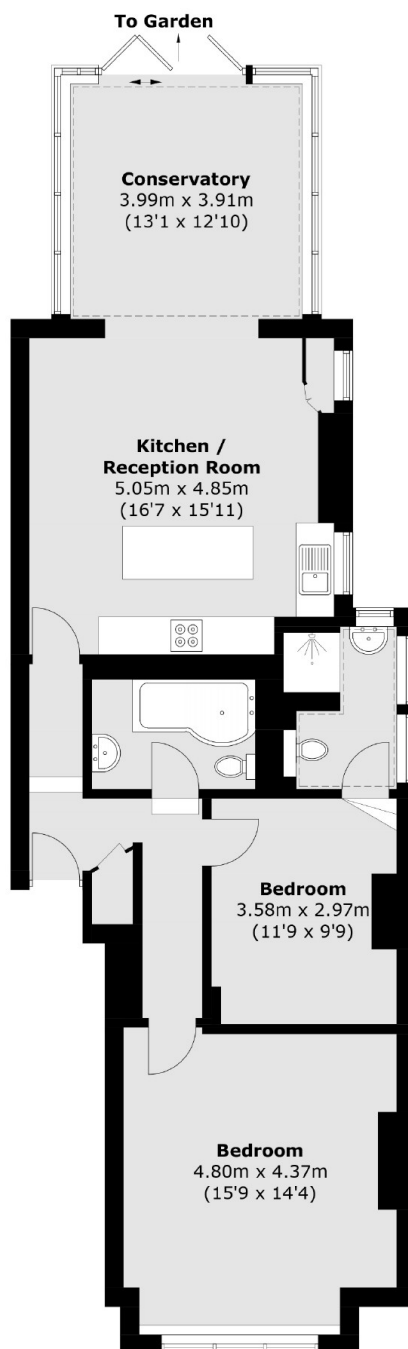
OFFERS OVER. Located on the ground floor of this semi-detached property, is a charming, two bedroom garden flat. This property benefits from a modern kitchen/diner as well as a conservatory with doors leading out to the garden. The property also benefits from a share of the freehold.

Leigham Court Road is well located to Streatham Hill and Tulse Hill Stations both of which provide frequent access to London Victoria and London Bridge. A good selection of shopping facilities are close by along Streatham High Road and West Norwood.

### Features

- Share Of Freehold
- Two Double Bedrooms
- Private Garden
- Over 990 Sq Ft
- Convenient Location
- Ground Floor Flat

# Leigham Court Road, London, SW16



Total area (approx.): 92.3 sq. m (993.5 sq. ft)

## Dexters

Streatham  
105 Streatham Hill  
London  
SW2 4UG  
Sales  
020 8674 7400

Energy Rating: D. We aim to make our particulars both accurate and reliable. However they are not guaranteed; nor do they form part of an offer or contract. If you require clarification on any points then please contact us, especially if you're traveling some distance to view. Please note that appliances and heating systems have not been tested and therefore no warranties can be given as to their good working order.

 **RICS** | Regulated  
Estate Agent  
and Letting Agent

[dexters.co.uk](https://www.dexters.co.uk)