



Pathfield Road, SW16

£400,000

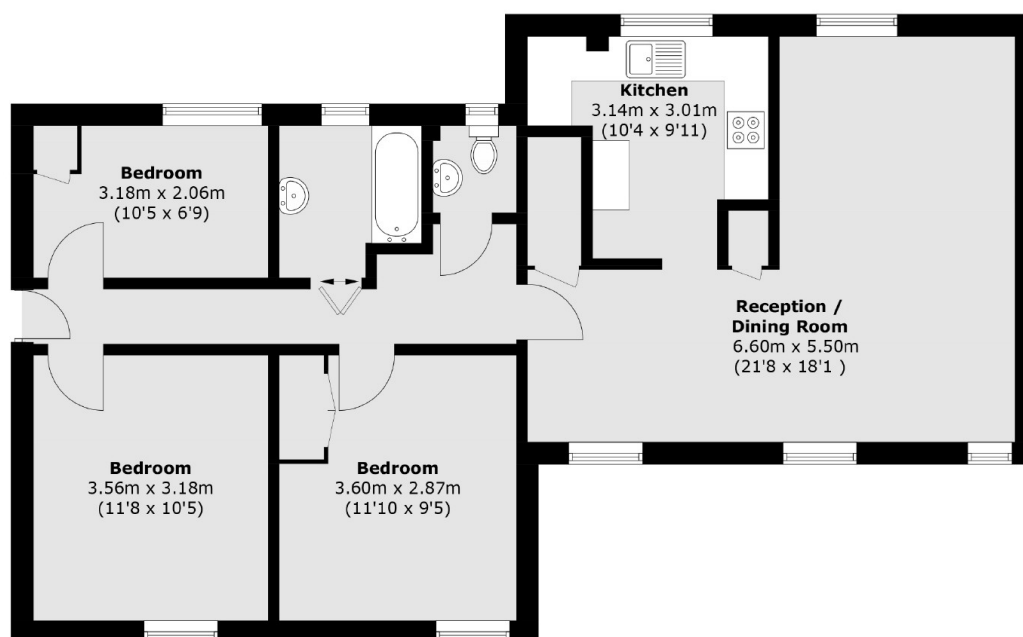
A spacious and bright, three bedroom apartment located on the ground floor of this quiet residential street. At over 870sqft this property has a large 'L-Shaped' living/dining room leading through to the modern kitchen. This home has a separate w/c, neutral bathroom, communal gardens and a long lease.

Pathfield Road is a stones throw from Streatham Common Station and the green spaces of Streatham Common. Streatham Station and Streatham High Road are also within easy reach, providing access to transport links, shops, restaurants and leisure amenities.

Features

- Three Bedrooms
- Large Living Room
- Modern Kitchen
- Communal Gardens
- Over 870sqft
- Long Lease

Pathfield Road, London, SW16



Total area (approx.): 80.9 sq. m (870.8 sq. ft)

Dexters

Streatham
105 Streatham Hill
London
SW2 4UG
Sales
020 8674 7400

Energy Rating: . We aim to make our particulars both accurate and reliable. However they are not guaranteed; nor do they form part of an offer or contract. If you require clarification on any points then please contact us, especially if you're traveling some distance to view. Please note that appliances and heating systems have not been tested and therefore no warranties can be given as to their good working order.

 **RICS** | Regulated
Estate Agent
and Letting Agent

[dexters.co.uk](https://www.dexters.co.uk)