



Blegborough Road, SW16

£325,000

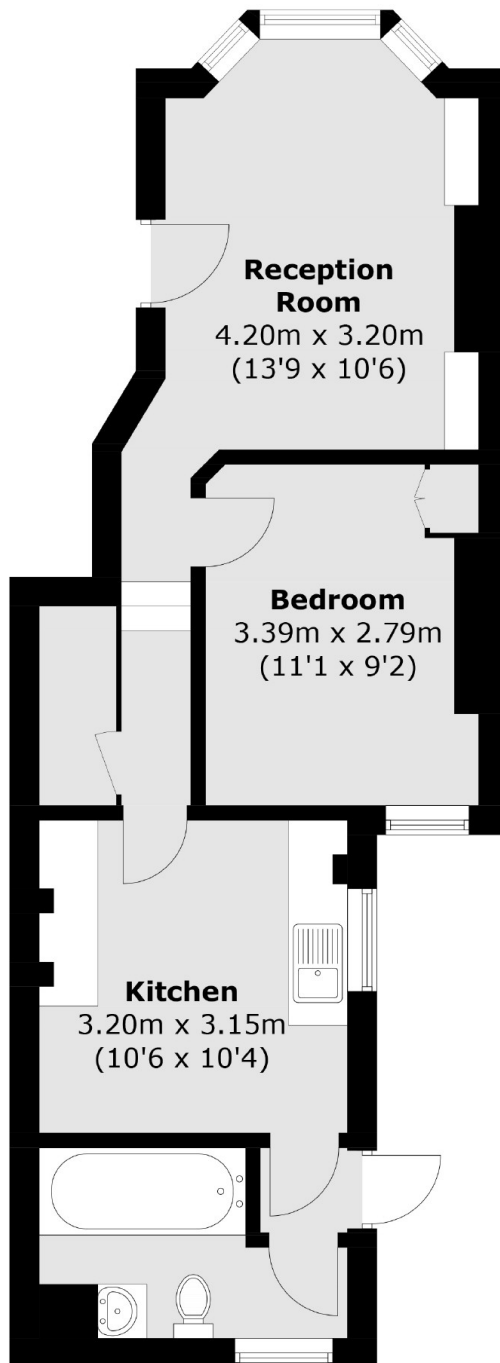
Filled with period charm is this one double bedroom period property, with large front facing reception and separate kitchen/diner. This home has a double bedroom with fitted wardrobe as well as a private garden. This home is also offered with no onward chain.

Blegborough Road can be found just off Mitcham Lane. Centrally located within easy reach of Streatham High Road, two mainline stations and with the open spaces of Tooting Bec Common easily assessable as well as local shops and amenities.

Features

- One Double Bedroom
- Chain Free
- Private Garden
- Separate Kitchen
- Bright Flat
- Close to Station

Blegborough Road,
London, SW16



Total area (approx.): 45.2 sq. m (486.5 sq. ft)

Dexters

Streatham
105 Streatham Hill
London
SW2 4UG
Sales
020 8674 7400

Energy Rating: C. We aim to make our particulars both accurate and reliable. However they are not guaranteed; nor do they form part of an offer or contract. If you require clarification on any points then please contact us, especially if you're traveling some distance to view. Please note that appliances and heating systems have not been tested and therefore no warranties can be given as to their good working order.

 **RICS** | Regulated
Estate Agent
and Letting Agent

[dexters.co.uk](https://www.dexters.co.uk)